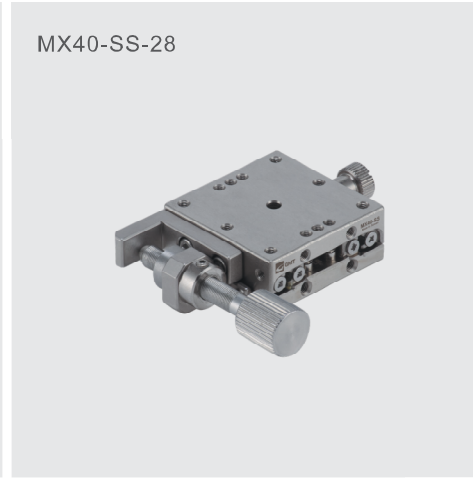


MX40-SC-28



MX40-SS-28



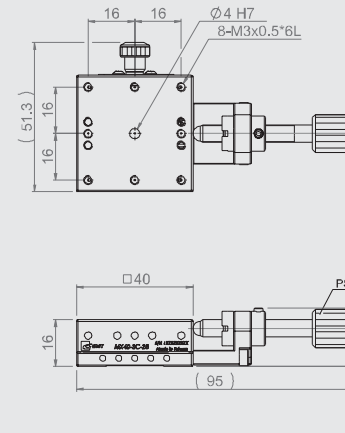
MY40-SC-28



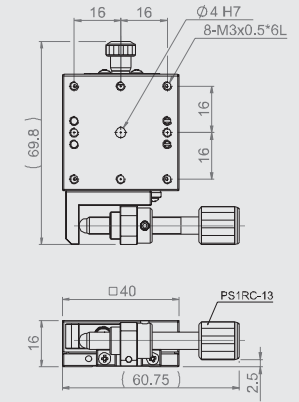
MY40-SS-28



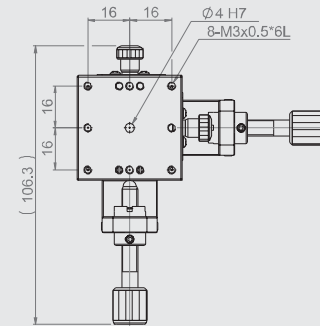
MX40-SC-28



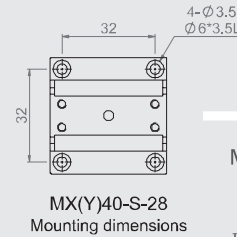
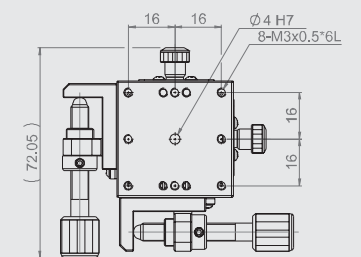
MX40-SS-28



MY40-SC-28



MY40-SS-28



MX(Y)40-S-28
Mounting dimensions

Specification

單位:mm

Model no.	Table size	Axis	Feed position	Travel stroke	Movement per knob rotation	Straightness accuracy	Allowable Loading (kgf)	Weight (kg)	Material	Surface finish
MX40-SC-28	40*40	X-axis	Central	±6.5	0.5mm	3µm	10	0.23	SUS 440C	Electroless nickel plating
MX40-SS-28			Side							
MY40-SC-28		XY-axis	Central				9.7	0.46		
MY40-SS-28			Side							