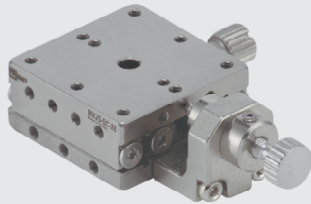
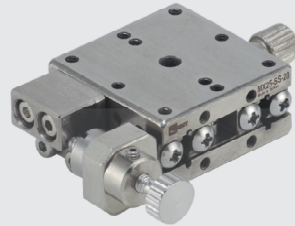


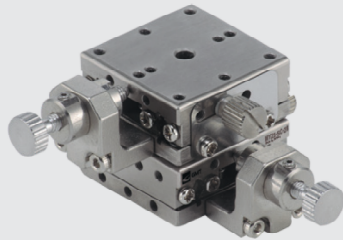
MX25-SC-28



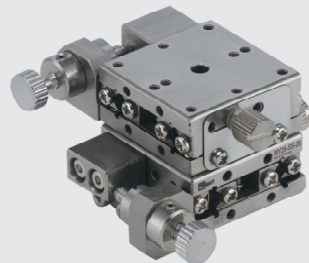
MX25-SS-28



MY25-SC-28



MY25-SS-28

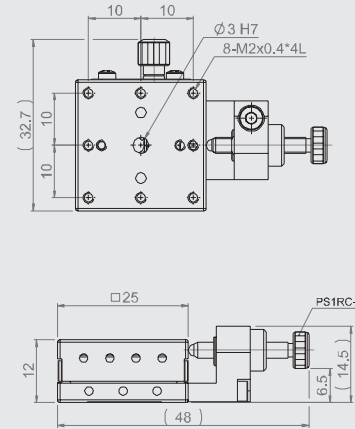


Specification

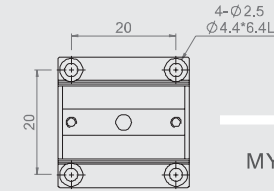
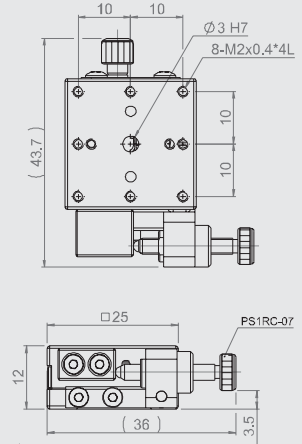
Unit: mm

Model no.	Table size	Axis	Feed position	Travel stroke	Movement per knob rotation	Straightness accuracy	Allowable Loading (kgf)	Weight (kg)	Material	Surface finish
MX25-SC-28	25*25	X-axis	Central	±3.2	0.5mm	3µm	4	0.07	SUS 440C	Electroless nickel plating
MX25-SS-28			Side							
MY25-SC-28		XY-axis	Central				3.9	0.14		
MY25-SS-28			Side							

MX25-SC-28

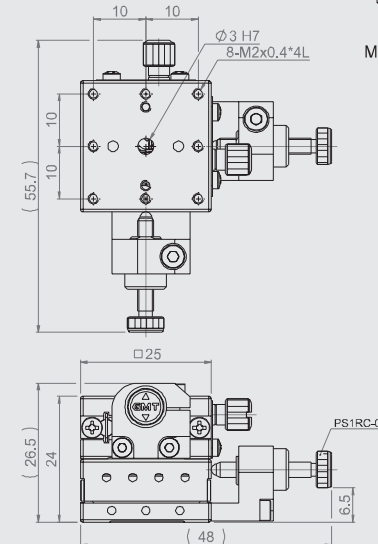


MX25-SS-28



MX(Y)25-S-28
Mounting dimensions

MY25-SC-28



MY25-SS-28

