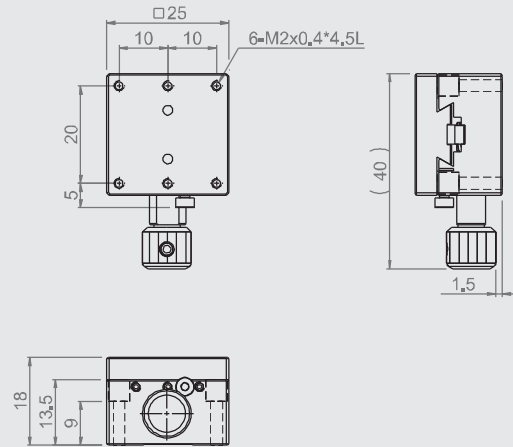


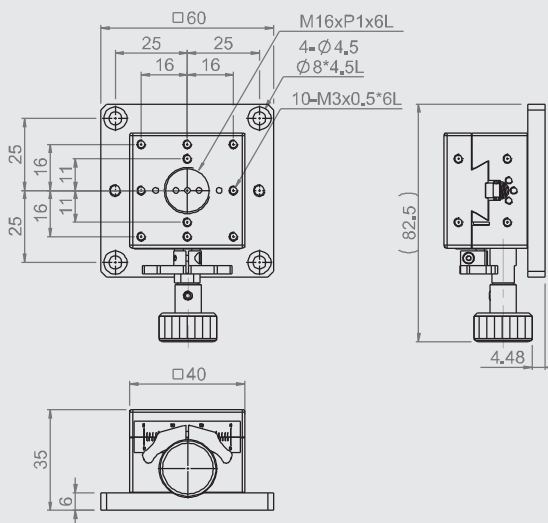
MC1D-60



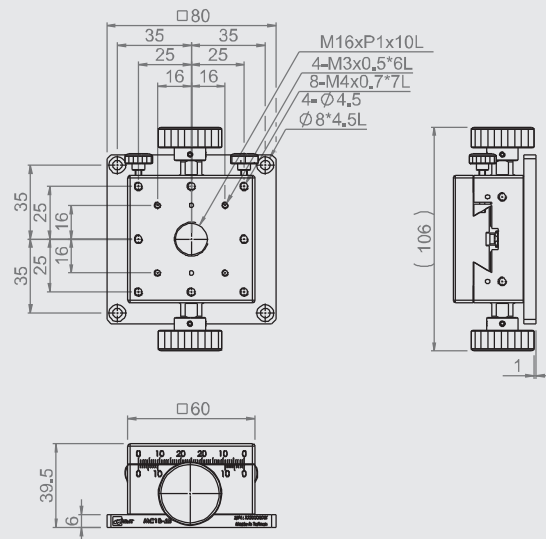
MC1D-25



MC1D-40



MC1D-60



★ The vernier of MC1D-25, MC1D-60 is on the opposite of the mounting surface of the fixture.

Specification

Unit: mm

Model no.	Table size	Travel stroke	Movement per knob rotation	Minimum reading	Straightness accuracy	Allowable Loading (kgf)	Weight kg	Material	Surface finish
MC1D-25	25*25	±5	17	0.1 mm / Vernier	20 μm	3.0	0.09	Brass alloy	Black fluororesin finished
MC1D-40	40*40	±10	20		20 μm				
MC1D-60	60*60	±20	18		30 μm	4.0	0.64	Aluminum alloy	Black anodized