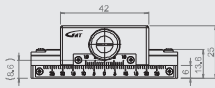
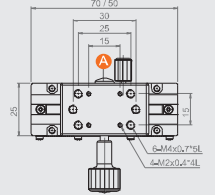
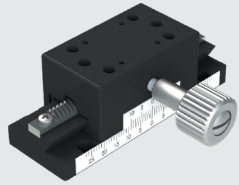
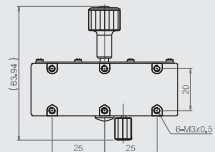


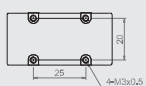
MC1C-50/70



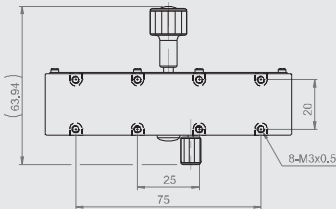
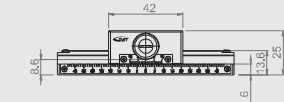
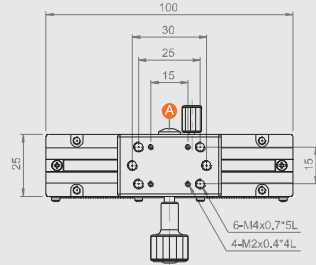
[MC1C-70]



[MC1C-50]



MC1C-100



- ★ The upper assembly was set by M2 screws, and the base assembly was set by M3 screws.
- ★ Use a flat driver to turn **A** clockwise for slow motion, or turn counterclockwise for smooth motion.

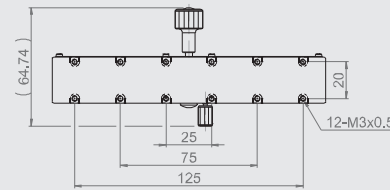
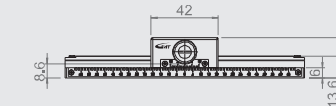
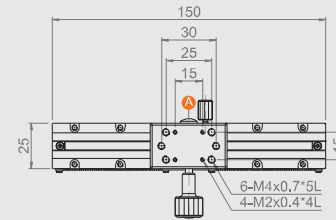
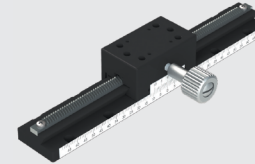
Specification

Unit: mm

Model no.	Table size	Travel stroke	Minimum reading	Straightness accuracy	Allowable Loading (kgf)	Weight kg	Material	Surface finish
MC1C-50	50	±15	0.1 mm / Vernier	30 μm	3.0	0.12	Aluminum alloy	Black anodized
MC1C-70	70	±25		30 μm				
MC1C-100	100	±40		30 μm		0.14		

- ★ A full rotation of the feeding screw knob equals a 18mm stroke.

MC1C-150



- ★ The upper assembly was set by M2 screws, and the base assembly was set by M3 screws.
- ★ Use a flat driver to turn **A** clockwise for slow motion, or turn counterclockwise for smooth motion.

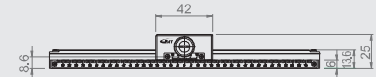
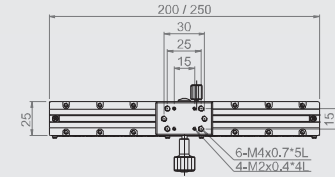
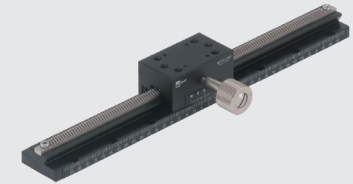
Specification

Unit: mm

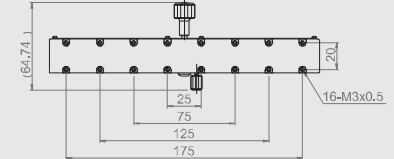
Model no.	Table size	Travel stroke	Minimum reading	Straightness accuracy	Allowable Loading (kgf)	Weight kg	Material	Surface finish
MC1C-150	150	±65	0.1 mm / Vernier	40 μm	3.0	0.17	Aluminum alloy	Black anodized
MC1C-200	200	±90		50 μm		0.21		
MC1C-250	250	±115		50 μm		0.36		

- ★ A full rotation of the feeding screw knob equals a 18mm stroke.

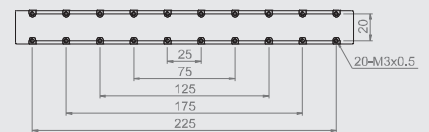
MC1C-200/250



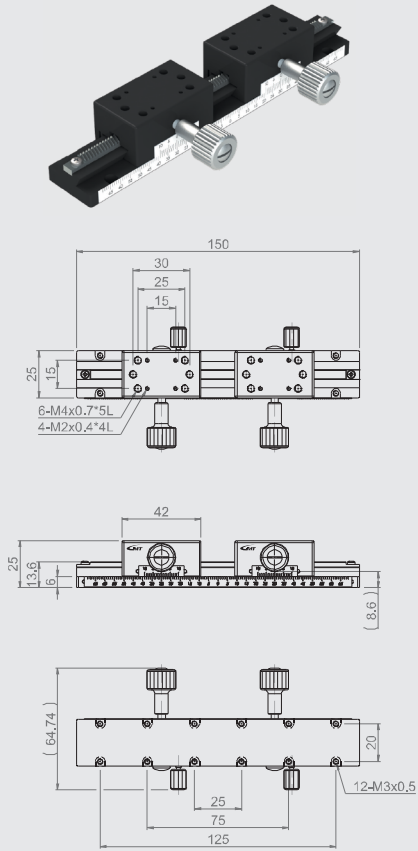
[MC1C-200]



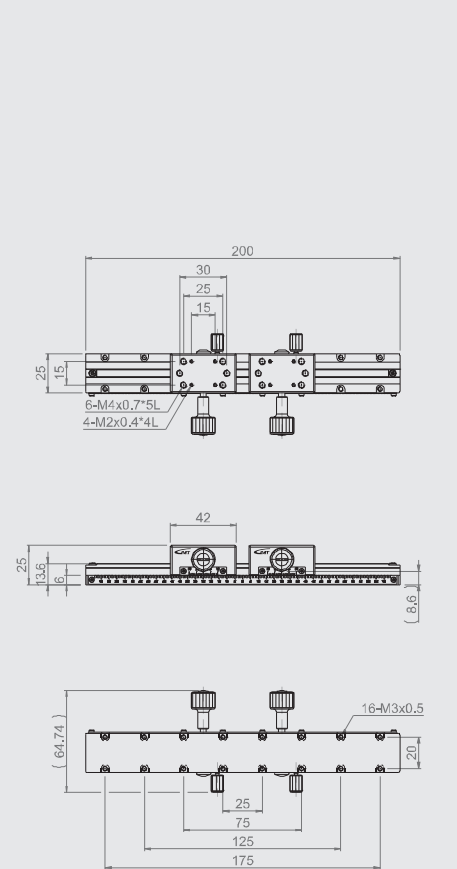
[MC1C-250]



MC1C-150-2



MC1C-200-2

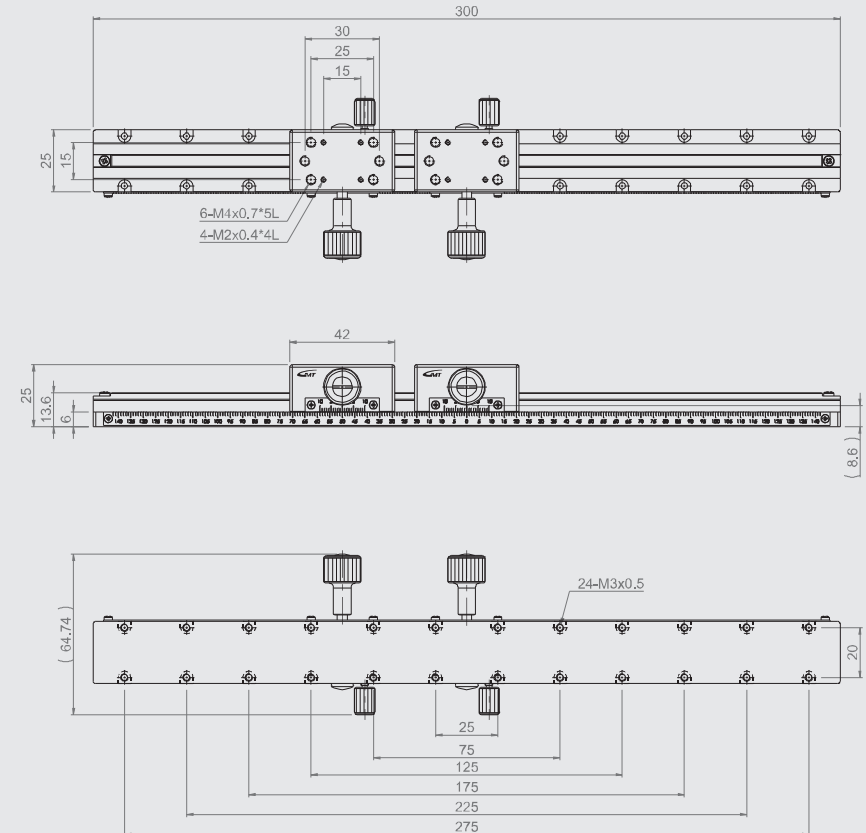


Specification

Unit: mm

Model no.	Table size	Axis	Travel stroke	Movement per knob rotation	Minimum reading	Straightness accuracy	Allowable Loading (kgf)	Weight kg	Material	Surface finish	Remarks
MC1C-150-2	150	X-axis	±20	18	0.1 mm / Vernier	40 μm	3	0.24	Aluminum alloy	Black anodized	Two slide blocks
MC1C-200-2	200		±37			50 μm		0.28			

MC1C-300-2



Specification

Unit: mm

Model no.	Table size	Axis	Travel stroke	Movement per knob rotation	Minimum reading	Straightness accuracy	Allowable Loading (kgf)	Weight kg	Material	Surface finish	Remarks
MC1C-300-2	300	X-axis	±70	18	0.1 mm / Vernier	70 μm	3	0.35	Aluminum alloy	Black anodized	Two slide blocks