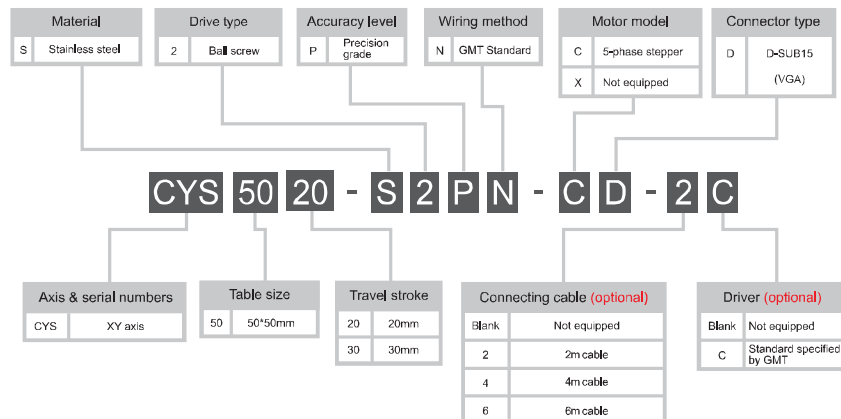


Model description

CYS50 series



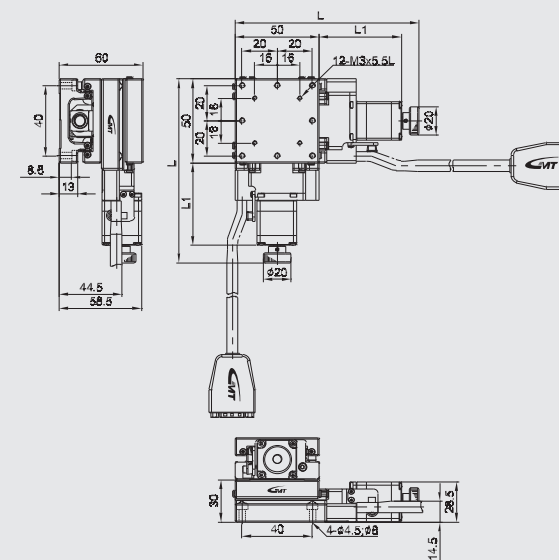
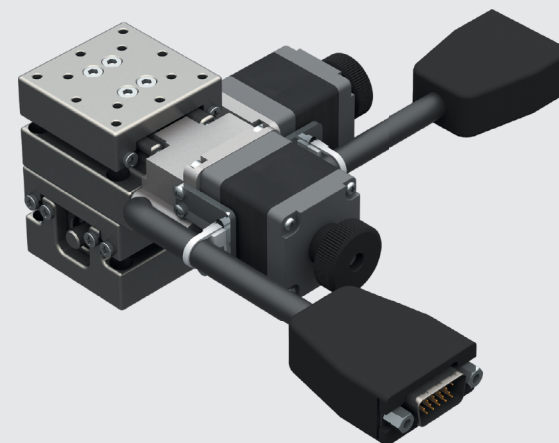
Model Number		CYS5020-S2PN-CD	CYS5030-S2PN-CD
Mechanical specifications	Table size	50X50 mm	
	Travel stroke	20 mm	30 mm
	Drive type	Ball screw Ø8 lead 1mm	
	Rail	Linear ball guiding	
	Stage material/Surface treatment	Stainless steel / Electroless nickel plating	
	Main unit weight	1.14 Kg	1.44 Kg
	Coupling	FAMCS11.6-5*5	
	Accuracy level	P : Precision grade N : GMT Standard	
Precision specifications	Resolution (pulse)	Full / Half 2 µm / 1 µm	
	Maximum speed (full step)	20 mm / sec	
	Positioning precision	5 µm	
	Repeatability precision	±0.5 µm	
	Load capacity	5 Kg	
	Missed step	1 µm	
	Parallelism	15 µm	
	Dynamic straightness	2 µm	
Electrical specifications	Motor	Type/Shaft numbers 5-phase stepper / □28 double shafts Brand/ Model Sanyo / SH5281-7211	
	Driver brand/Model	Please refer to motor / driver cross-reference table (page E3)	
	Stage side connector	15-pin male end connector D-SUB	
	Controller side connector	15-pin female end connector D-SUB (optional)	
	Origin sensor	Photoelectric sensor EE-SX4134	
	Limit sensor	N / A	
	Origin approximation sensor	N / A	
	Power voltage	24V±10%	
	Control output	NPN open collector output under 24V 8mA	
	Output control	Testing (sensing) : output transistor OFF (closed)	

* GMT motorized stage is equipped with D-SUB connector as the standard one which is available to be changed to HRS or NJC on request as per reference stated on P.171
* In case HRS connection cable is required, please consult to your regional sales.

XY axis



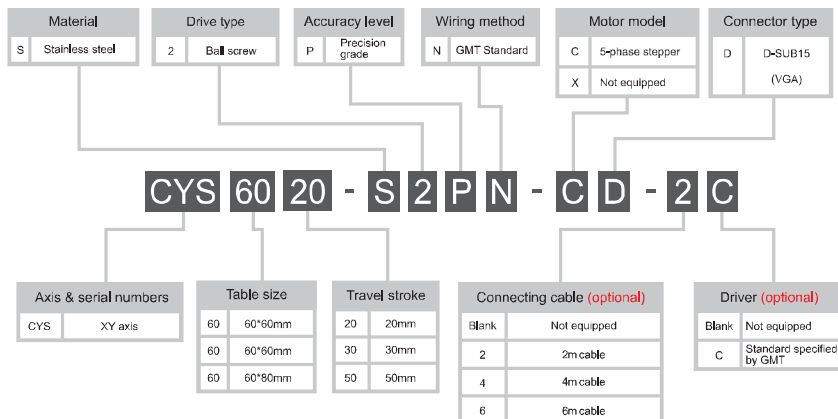
CYS50□-S2PN-CD



Stroke	20		30	
	L	L1	L	L1
Table size	50	134	70.5	144

Model description

CYS60 series



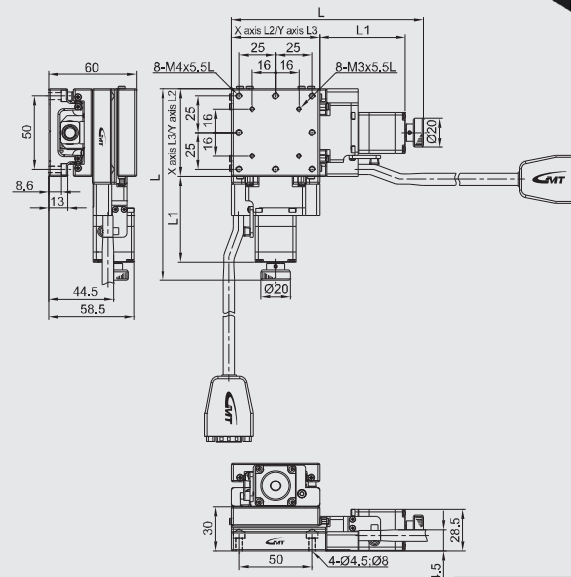
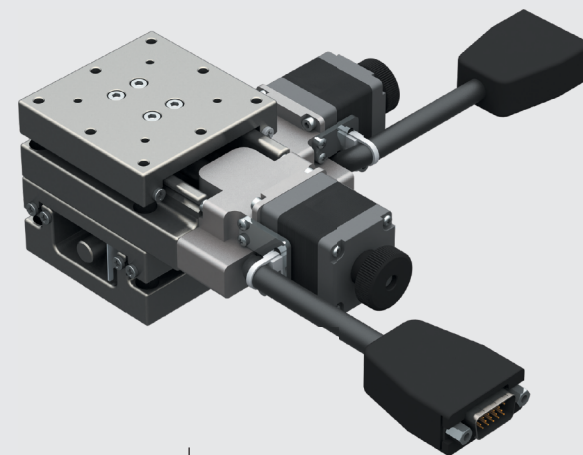
Model Number		CYS6020-S2PN-CD	CYS6030-S2PN-CD	CYS6050-S2PN-CD
Mechanical specifications	Table size	60X60 mm		
	Travel stroke	20 mm	30 mm	50 mm
	Drive type	Ball screw Ø8 lead 1mm		
	Rail	Linear ball guiding		
	Stage material/Surface treatment	Stainless steel / Electroless nickel plating		
	Main unit weight	1.5 Kg	1.6 Kg	2.22 Kg
	Coupling	FAMCS11.6-5*5		
Precision specifications	Accuracy level	P : Precision grade N : GMT Standard		
	Resolution (pulse)	Full / Half		
	Maximum speed (full step)	2 µm / 1 µm		
	Positioning precision	20 mm / sec		
	Repeatability precision	5 µm		
	Load capacity	±0.5 µm		
	Missed step	6 Kgf		
	Parallelism	1 µm		
	Dynamic straightness	20 µm		
	Dynamic parallelism	2 µm		
Electrical specifications	Motor	Type/Shaft numbers		
	Brand/ Model	5-phase stepper / □28 double shafts		
	Driver brand/Model	Sanyo / SH5281-7211		
	Stage side connector	Please refer to motor / driver cross-reference table (page E3)		
	Controller side connector	15-pin male end connector D-SUB		
	Origin sensor	15-pin female end connector D-SUB (optional)		
	Limit sensor	Photoelectric sensor EE-SX4134		
	Origin approximation sensor	N / A		
	Power voltage	24V±10%		
	Control output	NPN open collector output under 24V 8mA		
	Output control	Testing (sensing) : output transistor OFF (closed)		

* GMT motorized stage is equipped with D-SUB connector as the standard one which is available to be changed to HRS or NJC on request as per reference stated on P.171
* In case HRS connection cable is required, please consult to your regional sales.

XY axis



CYS60□-S2PN-CD



Stroke	20				30				50			
	L	L1	L2	L3	L	L1	L2	L3	L	L1	L2	L3
60	131	58.5	60	60	141	68.5	60	60	194	101.5	80	60

CYS80 series

Model description

The diagram illustrates the components of the model number **CYS 80 20 - S 2 P N - C D - 2 C** and their corresponding specifications:

- CYS**: Axis & serial numbers (CYS, XY axis)
- 80**: Table size (80, 80*80mm)
- 20**: Travel stroke (20, 20mm)
- S**: Material (Stainless steel)
- 2**: Drive type (Bolt screw)
- P**: Accuracy level (Precision grade)
- N**: Wiring method (GMT Standard)
- C**: Motor model (5-phase stepper)
- D**: Connector type (D-SUB15 (VGA))
- 2**: Connecting cable (optional) (2m cable)
- C**: Driver (optional) (Standard specified by GMT)

Model Number		CYS8020-S2PN-CD	CYS8030-S2PN-CD	CYS8050-S2PN-CD
Mechanical specifications	Table size	80X80 mm		
	Travel stroke	20 mm	30 mm	80X100 mm
	Drive type	Ball screw Ø8 lead 1mm		
	Rail	Linear ball guiding		
	Stage material/Surface treatment	Stainless steel / Electroless nickel plating		
	Main unit weight	2.3 Kg	2.4 Kg	2.7 Kg
	Coupling	FAMCS11.6-5*5		
	Accuracy level	P : Precision grade		
Wiring method	N : GMT Standard			
Precision specifications	Resolution (pulse)	Full / Half		
	Maximum speed (full step)	2 µm / 1 µm		
	Positioning precision	20 mm / sec		
	Repeatability precision	5 µm		
	Load capacity	±0.5 µm		
	Missed step	7 Kgf		
	Parallelism	1 µm		
	Dynamic straightness	20 µm		
	Dynamic parallelism	2 µm		
		10 µm		
Electrical specifications	Motor	Type/Shaft numbers		
		5-phase stepper / □28 double shafts		
	Brand/ Model	Sanyo / SH5281-7211		
	Driver brand/Model	Please refer to motor / driver cross-reference table (page E3)		
	Connector	Stage side connector		
		15-pin male end connector D-SUB		
		Controller side connector		
		15-pin female end connector D-SUB (optional)		
		Origin sensor		
		Photoelectric sensor EE-SX4134		
Sensor	Origin approximation sensor	N / A		
	Power voltage	24V±10%		
	Control output	NPN open collector output under 24V 8mA		
	Output control	Testing (sensing) : output transistor OFF (closed)		

* In case HRS connection cable is required, please consult to your regional sales.

XY axis



CYS80□-S2PN-CD

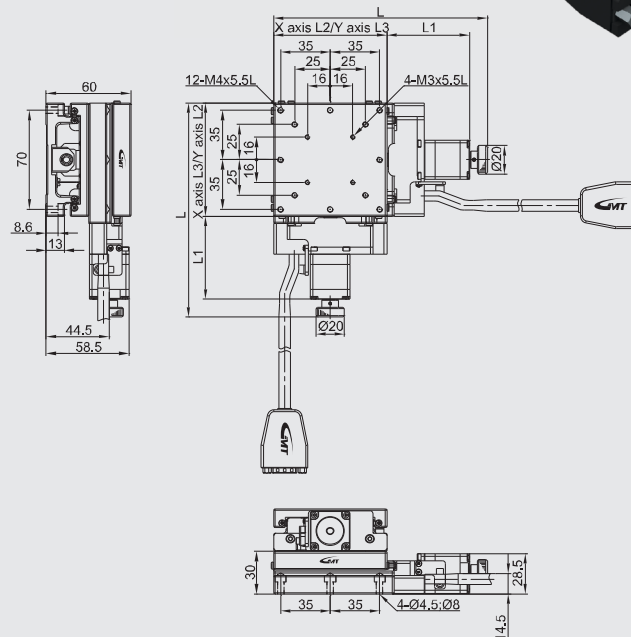
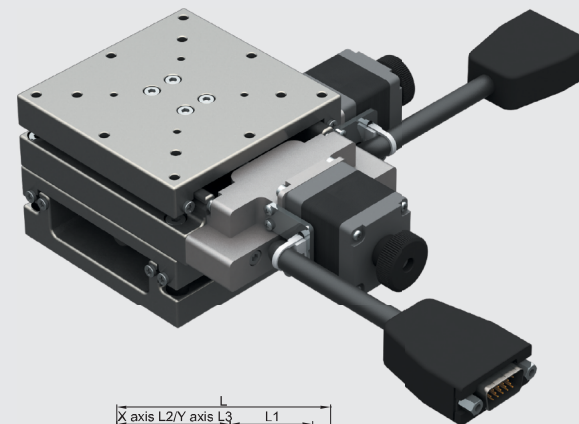


Table size	Stroke 20				Stroke 30				Stroke 50			
	L	L1	L2	L3	L	L1	L2	L3	L	L1	L2	L3
80	151	58.5	80	80	161	68.5	80	80	194	101.5	100	80