

Model description

# CYN50 / CYC50 series

Material	Drive type	Accuracy level	Wiring method	Motor model	Connector type
S Stainless steel	2 Ball screw	P Precision grade	N GMT Standard	C 5-phase stepper X Not equipped	D D-SUB15 (VGA)

CYN 50 30 - S 2 P N - C D - P1 - 2 C

Axis & serial numbers	Table size	Stroke	Ball screw pitch	Connecting cable (optional)	Driver (optional)
CYN XY axis (w/o cover)	50 50*50mm	30 30mm	P1 1mm	Blank Not equipped	Blank Not equipped
CYC XY axis (w/cover)		50 50mm	P2 2mm	2 2m cable	C Standard specified by GMT
		75 75mm		4 4m cable	
				6 6m cable	

Model Number		CYN5030-S2PN-CD-P1	CYN5030-S2PN-CD-P2	CYN5050-S2PN-CD-P1	CYN5050-S2PN-CD-P2	CYN5075-S2PN-CD-P1	CYN5075-S2PN-CD-P2	
		CYC5030-S2PN-CD-P1	CYC5030-S2PN-CD-P2	CYC5050-S2PN-CD-P1	CYC5050-S2PN-CD-P2	CYC5075-S2PN-CD-P1	CYC5075-S2PN-CD-P2	
Mechanical specifications	Table size	50X50 mm						
	Travel stroke	30 mm		50 mm		75 mm		
	Drive type	Ball screw Ø8 lead 1mm Ball screw Ø8 lead 2mm Ball screw Ø8 lead 1mm Ball screw Ø8 lead 2mm Ball screw Ø8 lead 1mm Ball screw Ø8 lead 2mm						
	Rail	Circular Linear ball guiding						
	Stage material/Surface treatment	Stainless steel / Electroless nickel plating						
	Main unit weight	N : 1.94 Kg / C : 2.12 Kg		N : 2.2 Kg / C : 2.34 Kg		N : 2.48 Kg / C : 2.58 Kg		
	Coupling	FAMCS11.6-5*5						
Precision specifications	Accuracy level	P : Precision grade						
	Wiring method	N : GMT Standard						
	Resolution (pulse)	Full / Half		2 µm / 1 µm		4 µm / 2 µm		
	Maximum speed (full step)	20 mm / sec		40 mm / sec		20 mm / sec		
	Positioning precision	5 µm		4 µm / 2 µm		7 µm		
	Repeatability precision			±0.5 µm				
	Load capacity			8 Kgf				
Electrical specifications	Missed step			1 µm				
	Parallelism			15 µm				
	Dynamic straightness			2 µm				
	Dynamic parallelism			10 µm				
	Motor	Type/Shaft numbers	5-phase stepper / □28 double shafts					
		Brand/ Model	Sanyo / SH5281-7211					
	Driver brand/Model	Please refer to motor / driver cross-reference table (page E3)						
Connector	Stage side connector	15-pin male end connector D-SUB						
	Controller side connector	15-pin female end connector D-SUB (optional)						
	Origin sensor	Photoelectric sensor EE-SX4134						
	Limit sensor							
Sensor	Origin approximation sensor	N/A						
	Power voltage	24V±10%						
	Control output	NPN open collector output under 24V 8mA						
	Output control	Testing (sensing) : output transistor OFF (closed)						

\*GMT standard wiring is defined as the product photo, and not optional available.

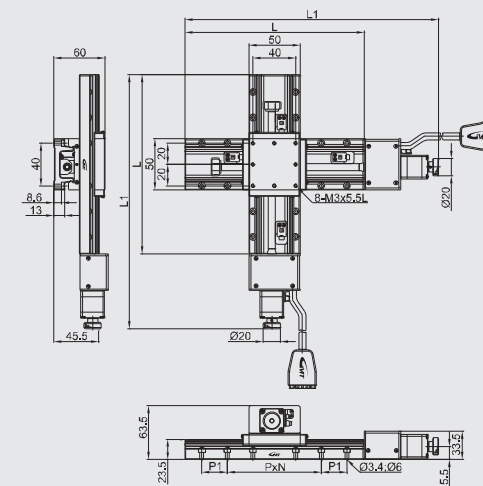
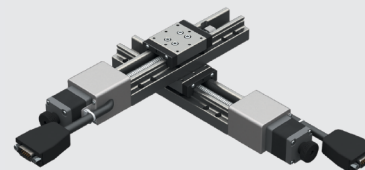
\*GMT motorized stage is equipped with D-SUB connector as the standard one which is available to be changed to HRS or NUC on request as per reference stated on P.171

\*In case HRS connection cable is required, please consult to your regional sales.

XY axis

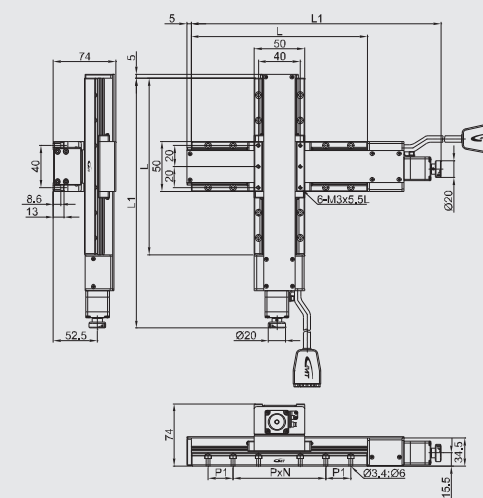
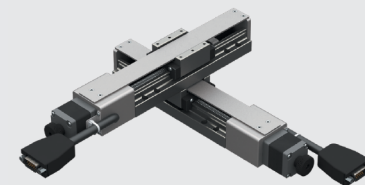


## CYN50□-S2PN-CD-P1



Stroke	L	L1	P	N	P1
30	110	197.5	40	1	20
50	120	217.5	40	3	N/A
75	145	242.5	40	3	N/A

## CYC50□-S2PN-CD-P1



Model description

# CYN60 / CYC60 series

Material	Drive type	Accuracy level	Wiring method	Motor model	Connector type
S Stainless steel	2 Ball screw	P Precision grade	N GMT Standard	C 5-phase stepper X Not equipped	D D-SUB15 (VGA)

CYN 60 30 - S 2 P N - C D - P1 - 2 C

Axis & serial numbers	Table size	Stroke	Ball screw pitch	Connecting cable (optional)	Driver (optional)
CYN XY axis (w/o cover)	60 60*60mm	50 50mm	P1 1mm	Blank Not equipped	Blank Not equipped
CYC XY axis (w/cover)		75 75mm	P2 2mm	2 2m cable 4 4m cable 6 6m cable	C Standard specified by GMT

Model Number		CYN6030-S2PN-CD-P1	CYN6030-S2PN-CD-P2	CYN6050-S2PN-CD-P1	CYN6050-S2PN-CD-P2	CYN6075-S2PN-CD-P1	CYN6075-S2PN-CD-P2	
		CYC6030-S2PN-CD-P1	CYC6030-S2PN-CD-P2	CYC6050-S2PN-CD-P1	CYC6050-S2PN-CD-P2	CYC6075-S2PN-CD-P1	CYC6075-S2PN-CD-P2	
Mechanical specifications	Table size	60X60 mm						
	Travel stroke	30 mm		50 mm		75 mm		
	Drive type	Ball screw Ø8 lead 1mm Ball screw Ø8 lead 2mm Ball screw Ø8 lead 1mm Ball screw Ø8 lead 2mm Ball screw Ø8 lead 1mm Ball screw Ø8 lead 2mm						
	Rail	Circular Linear ball guiding						
	Stage material/Surface treatment	Stainless steel / Electroless nickel plating						
	Main unit weight	N : 2.2 Kg / C : 2.58 Kg		N : 2.38 Kg / C : 2.66 Kg		N : 2.6 Kg / C : 2.88 Kg		
	Coupling	FAMCS11,6-5*5						
Precision specifications	Accuracy level	P : Precision grade						
	Wiring method	N : GMT Standard						
	Resolution (pulse)	Full / Half		2 µm / 1 µm 4 µm / 2 µm		2 µm / 1 µm 4 µm / 2 µm		
	Maximum speed (full step)	20 mm / sec 40 mm / sec		20 mm / sec 40 mm / sec		20 mm / sec 40 mm / sec		
	Positioning precision	5 µm						
	Repeatability precision	±0,5 µm						
	Load capacity	10 Kg						
Electrical specifications	Missed step	1 µm						
	Parallelism	15 µm						
	Dynamic straightness	2 µm						
	Dynamic parallelism	10 µm						
	Motor	Type/Shaft numbers	5-phase stepper / □28 double shafts					
		Brand/ Model	Sanyo / SH5281-7211					
	Driver brand/Model	Please refer to motor / driver cross-reference table (page E3)						
Connector	Stage side connector	15-pin male end connector D-SUB						
	Controller side connector	15-pin female end connector D-SUB (optional)						
	Origin sensor	Photoelectric sensor EE-SX4134						
Sensor	Limit sensor							
	Origin approximation sensor	N/A						
	Power voltage	24V±10%						
	Control output	NPN open collector output under 24V 8mA						
	Output control	Testing (sensing) : output transistor OFF (closed)						

\*GMT standard wiring is defined as the product photo, and not optional available.

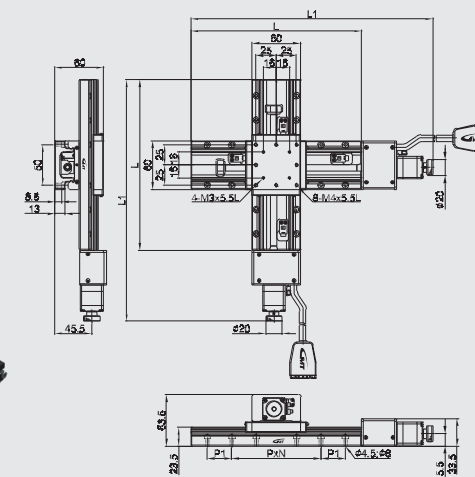
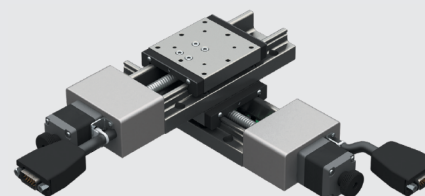
\*GMT motorized stage is equipped with D-SUB connector as the standard one which is available to be changed to HRS or N/C on request as per reference stated on P.171

\*In case HRS connection cable is required, please consult to your regional sales.

XY axis

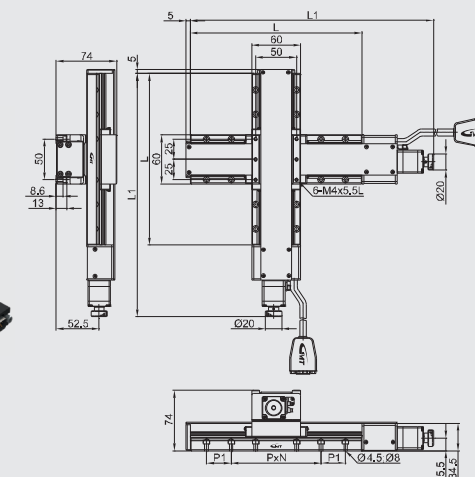
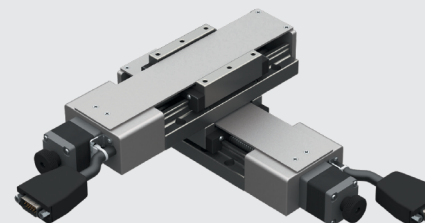


## CYN60□-S2PN-CD-P1



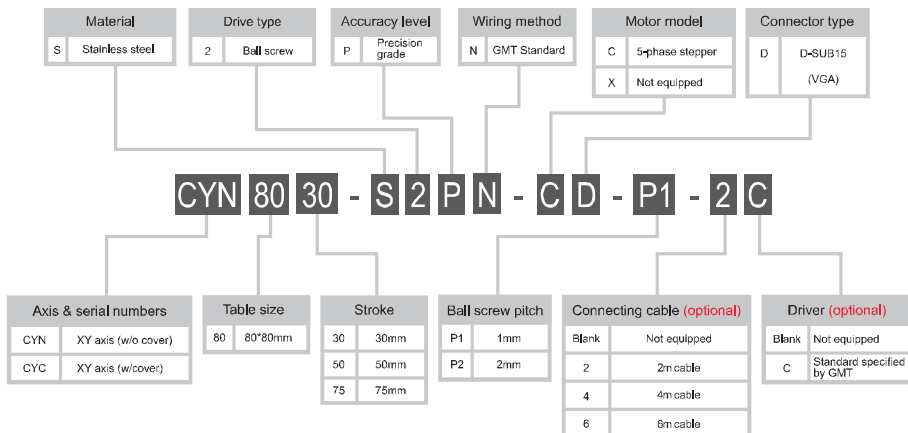
Stroke	L	L1	P	N	P1
30	120	209	50	1	25
50	140	229	50	1	25
75	165	254	50	3	N/A

## CYC60□-S2PN-CD-P1



Model description

# CYN80 / CYC80series



Model Number		CYN8030-S2PN-CD-P1	CYN8030-S2PN-CD-P2	CYN8050-S2PN-CD-P1	CYN8050-S2PN-CD-P2	CYN8075-S2PN-CD-P1	CYN8075-S2PN-CD-P2	
		CYC8030-S2PN-CD-P1	CYC8030-S2PN-CD-P2	CYC8050-S2PN-CD-P1	CYC8050-S2PN-CD-P2	CYC8075-S2PN-CD-P1	CYC8075-S2PN-CD-P2	
Mechanical specifications	Table size	80X80 mm						
	Travel stroke	30 mm		50 mm		75 mm		
	Drive type	Ball screw Ø8 lead 1mm	Ball screw Ø8 lead 2mm	Ball screw Ø8 lead 1mm	Ball screw Ø8 lead 2mm	Ball screw Ø8 lead 1mm	Ball screw Ø8 lead 2mm	
	Rail	Circular Linear ball guiding						
	Stage material/Surface treatment	Stainless steel / Electroless nickel plating						
	Main unit weight	N : 1.94 Kg / C : 2.12 Kg		N : 2.2 Kg / C : 2.34 Kg		N : 2.48 Kg / C : 2.58 Kg		
	Coupling	FAMCS11.6-5*5						
Precision specifications	Accuracy level	P : Precision grade						
	Wiring method	N : GMT Standard						
	Resolution (pulse)	Full / Half	2 µm / 1 µm	4 µm / 2 µm	2 µm / 1 µm	4 µm / 2 µm	2 µm / 1 µm	4 µm / 2 µm
	Maximum speed (full step)		20 mm / sec	40 mm / sec	20 mm / sec	40 mm / sec	20 mm / sec	40 mm / sec
	Positioning precision		5 µm				7 µm	
	Repeatability precision		±0.5 µm					
	Load capacity		14 Kgf					
Electrical specifications	Missed step		1 µm					
	Parallelism		20 µm					
	Dynamic straightness		2 µm					
	Dynamic parallelism		10 µm					
	Motor	Type/Shaft numbers	5-phase stepper / □28 double shafts					
		Brand/ Model	Sanyo / SH5281-7211					
	Driver brand/Model		Please refer to motor / driver cross-reference table (page E3)					
Connector	Stage side connector	15-pin male end connector D-SUB						
	Controller side connector	15-pin female end connector D-SUB (optional)						
	Origin sensor	Photoelectric sensor EE-SX4134						
Sensor	Limit sensor							
	Origin approximation sensor	N/A						
	Power voltage	24V±10%						
	Control output	NPN open collector output under 24V 8mA						
	Output control	Testing (sensing) : output transistor OFF (closed)						

\*GMT standard wiring is defined as the product photo, and not optional available.

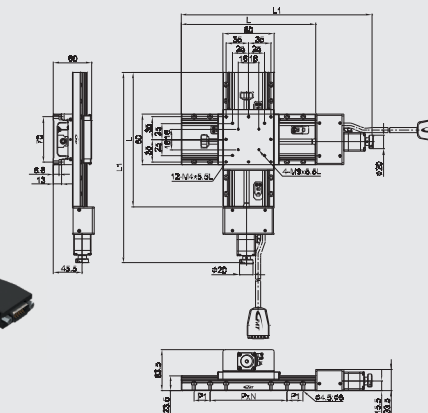
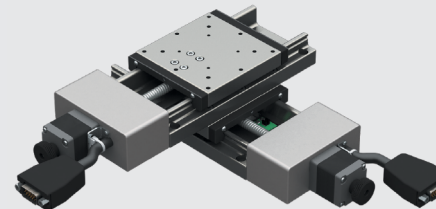
\*GMT motorized stage is equipped with D-SUB connector as the standard one which is available to be changed to HRS or N/C on request as per reference stated on P.171

\*In case HRS connection cable is required, please consult to your regional sales.

XY axis



## CYN80□-S2PN-CD-P1



Stroke	L	L1	P	N	P1
30	140	229	70	1	25
50	160	247.5	35	4	35
75	185	272.5	35	4	35

## CYC80□-S2PN-CD-P1

