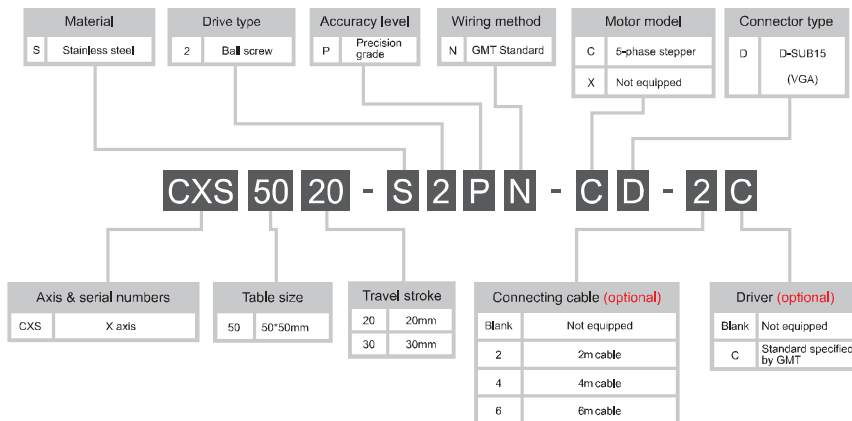


Model description

CXS50 series



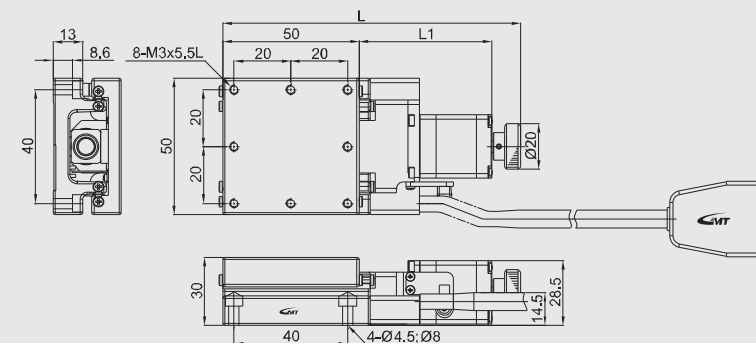
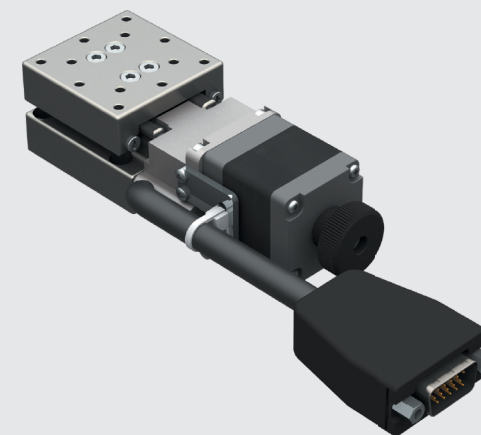
Model Number		CXS5020-S2PN-CD	CXS5030-S2PN-CD
Mechanical specifications	Table size	50X50 mm	
	Travel stroke	20 mm	30 mm
	Drive type	Ball screw Ø8 lead 1mm	
	Rail	Linear ball guiding	
	Stage material/Surface treatment	Stainless steel / Electroless nickel plating	
	Main unit weight	0.57 Kg	0.72 Kg
	Coupling	FAMCS11.6-5*5	
	Accuracy level	P : Precision grade N : GMT Standard	
	Wiring method		
	Resolution (pulse)	Full / Half 2 µm / 1 µm	
Precision specifications	Maximum speed (full step)	20 mm / sec	
	Positioning precision	5 µm	
	Repeatability precision	±0.5 µm	
	Load capacity	6 Kg	
	Missed step	1 µm	
	Parallelism	15 µm	
	Dynamic straightness	2 µm	
	Dynamic parallelism	10 µm	
	Motor	5-phase stepper / □28 double shafts Sanyo / SH5281-7211	
	Driver brand/Model	Please refer to motor / driver cross-reference table (page E3)	
Electrical specifications	Connector	Stage side connector 15-pin male end connector D-SUB Controller side connector 15-pin female end connector D-SUB (optional)	
	Sensor	Origin sensor Limit sensor Photoelectric sensor EE-SX4134	
	Origin approximation sensor	N / A	
	Power voltage	24V±10%	
	Control output	NPN open collector output under 24V 8mA	
	Output control	Testing (sensing) : output transistor OFF (closed)	

* GMT motorized stage is equipped with D-SUB connector as the standard one which is available to be changed to HRS or NJC on request as per reference stated on P.171
* In case HRS connection cable is required, please consult to your regional sales.

X axis



CXS50□-S2PN-CD



Stroke	20		30	
	L	L1	L	L1
Table size	50	134	70.5	144

Model description

CXS60 series

Material	Drive type	Accuracy level	Wiring method	Motor model	Connector type
S Stainless steel	2 Ball screw	P Precision grade	N GMT Standard	C 5-phase stepper X Not equipped	D D-SUB15 (VGA)

CXS 60 20 - S 2 P N - C D - 2 C
--

Axis & serial numbers	Table size	Travel stroke	Connecting cable (optional)	Driver (optional)
CXS X axis	60 60*60mm 60 60*60mm 60 60*80mm	20 20mm 30 30mm 50 50mm	Blank Not equipped 2 2m cable 4 4m cable 6 6m cable	Blank Not equipped C Standard specified by GMT

Model Number	CXS6020-S2PN-CD	CXS6030-S2PN-CD	CXS6050-S2PN-CD
Table size	60X60 mm	60X60 mm	60X80 mm
Travel stroke	20 mm	30 mm	50 mm
Drive type	Ball screw Ø8 lead 1mm		
Rail	Linear ball guiding		
Stage material/Surface treatment	Stainless steel / Electroless nickel plating		
Main unit weight	0.75 Kg	0.8 Kg	1.11 Kg
Coupling	FAMCS11.6-5*5		
Accuracy level	P : Precision grade		
Wiring method	N : GMT Standard		
Resolution (pulse)	Full / Half	2 µm / 1 µm	
Maximum speed (full step)		20 mm / sec	
Positioning precision		5 µm	
Repeatability precision		±0.5 µm	
Load capacity		7 Kg	
Missed step		1 µm	
Parallelism		20 µm	
Dynamic straightness		2 µm	
Dynamic parallelism		10 µm	
Motor	5-phase stepper / □28 double shafts		
Brand/ Model	Sanyo / SH5281-7211		
Driver brand/Model	Please refer to motor / driver cross-reference table (page E3)		
Stage side connector	15-pin male end connector D-SUB		
Controller side connector	15-pin female end connector D-SUB (optional)		
Origin sensor	Photoelectric sensor EE-SX4134		
Limit sensor	N / A		
Origin approximation sensor	N / A		
Power voltage	24V±10%		
Control output	NPN open collector output under 24V 8mA		
Output control	Testing (sensing) : output transistor OFF (closed)		

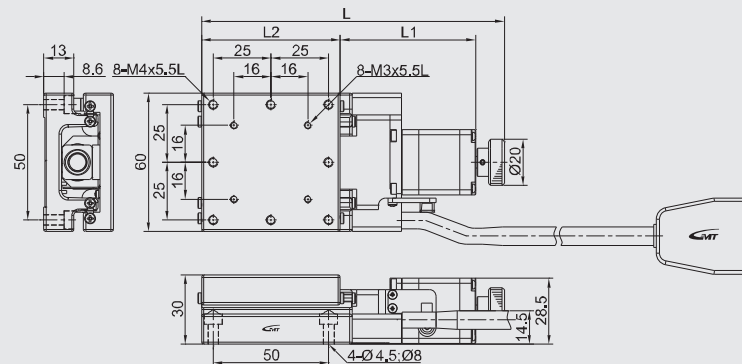
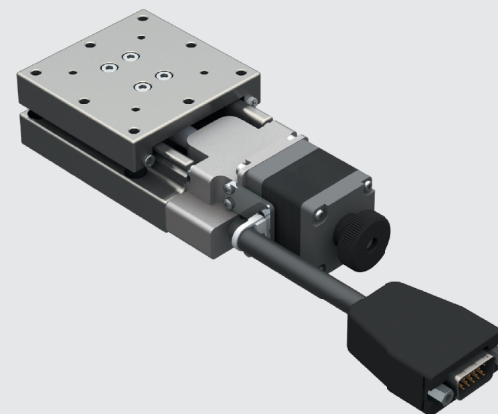
* GMT motorized stage is equipped with D-SUB connector as the standard one which is available to be changed to HRS or NJC on request as per reference stated on P.171

* In case HRS connection cable is required, please consult to your regional sales.

X axis



CXS60□-S2PN-CD



Stroke	20			30			50		
Table size	L	L1	L2	L	L1	L2	L	L1	L2
60	131	58.5	60	141	68.5	60	194	101.5	80

Model description

CXS80 series

Material	Drive type	Accuracy level	Wiring method	Motor model	Connector type
S Stainless steel	2 Ball screw	P Precision grade	N GMT Standard	C 5-phase stepper X Not equipped	D D-SUB15 (VGA)

CXS 80 20 - S 2 P N - C D - 2 C
--

Axis & serial numbers	Table size	Travel stroke	Connecting cable (optional)	Driver (optional)
CXS X axis	80 80*80mm 80 80*80mm 80 80*100mm	20 20mm 30 30mm 50 50mm	Blank Not equipped 2 2m cable 4 4m cable 6 6m cable	Blank Not equipped C Standard specified by GMT

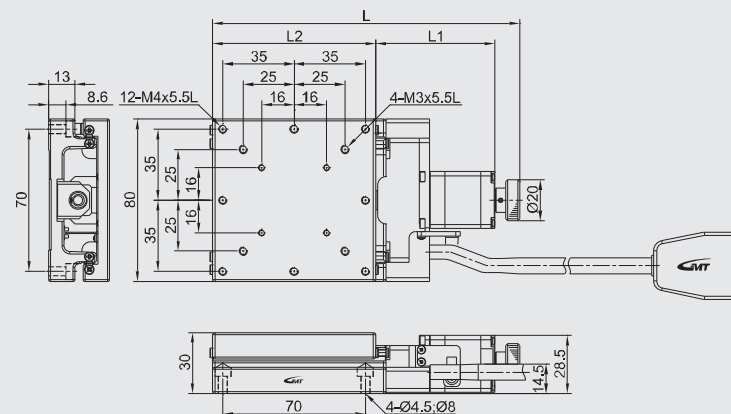
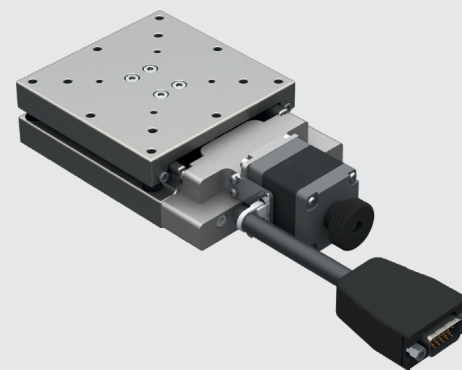
Model Number		CXS8020-S2PN-CD	CXS8030-S2PN-CD	CXS8050-S2PN-CD
Mechanical specifications	Table size	80X80 mm		
	Travel stroke	20 mm	30 mm	80X100 mm
	Drive type	Ball screw Ø8 lead 1mm		
	Rail	Linear ball guiding		
	Stage material/Surface treatment	Stainless steel / Electroless nickel plating		
	Main unit weight	1.15 Kg	1.2 Kg	1.35 Kg
	Coupling	FAMCS11.6-5*5		
Accuracy level	P : Precision grade			
Wiring method	N : GMT Standard			
Precision specifications	Resolution (pulse)	Full / Half	2 µm / 1 µm	
	Maximum speed (full step)		20 mm / sec	
	Positioning precision		5 µm	
	Repeatability precision		±0.5 µm	
	Load capacity		8 Kg	
	Missed step		1 µm	
	Parallelism		20 µm	
	Dynamic straightness		2 µm	
	Dynamic parallelism		10 µm	
Electrical specifications	Motor	Type/Shaft numbers	5-phase stepper / □28 double shafts	
		Brand/ Model	Sanyo / SH5281-7211	
	Driver brand/Model		Please refer to motor / driver cross-reference table (page E3)	
	Connector	Stage side connector	15-pin male end connector D-SUB	
		Controller side connector	15-pin female end connector D-SUB (optional)	
		Origin sensor	Photoelectric sensor EE-SX4134	
		Limit sensor		
	Sensor	Origin approximation sensor	N / A	
		Power voltage	24V±10%	
	Control output	NPN open collector output under 24V 8mA		
	Output control	Testing (sensing) : output transistor OFF (closed)		

* GMT motorized stage is equipped with D-SUB connector as the standard one which is available to be changed to HRS or NJC on request as per reference stated on P.171
* In case HRS connection cable is required, please consult to your regional sales.

X axis



CXS80□-S2PN-CD



Stroke	20			30			50		
	L	L1	L2	L	L1	L2	L	L1	L2
Table size	151	58.5	80	161	68.5	80	194	101.5	100