

Model description

CXN50 / CXC50 series

Material		Drive type		Accuracy level		Wiring method		Motor model		Connector type	
S	Stainless steel	2	Ball screw	P	Precision grade	N	GMT Standard	C	5-phase stepper	D	D-SUB15
								X	Not equipped		(VGA)

CXN 50 30 - S 2 P N - C D - P1 - 2 C

Axis & serial numbers		Table size		Stroke		Ball screw pitch		Connecting cable (optional)		Driver (optional)	
CXN	X axis (w/o cover)	50	50*50mm	30	30mm	P1	1mm	Blank	Not equipped	Blank	Not equipped
CXC	X axis (w/cover)			50	50mm	P2	2mm	2	2m cable	C	Standard specified by CMT
				75	75mm			4	4m cable		
								6	6m cable		

Model Number		CXN5030-S2PW-CDP1	CXN5030-S2PW-CDP2	CXN5050-S2PW-CDP1	CXN5050-S2PW-CDP2	CXN5075-S2PW-CDP1	CXN5075-S2PW-CDP2	
		CXC5030-S2PW-CDP1	CXC5030-S2PW-CDP2	CXC5050-S2PW-CDP1	CXC5050-S2PW-CDP2	CXC5075-S2PW-CDP1	CXC5075-S2PW-CDP2	
Mechanical specifications	Table size	50X50 mm						
	Travel stroke	30 mm		50 mm		75 mm		
	Drive type	Ball screw Ø8 lead 1mm	Ball screw Ø8 lead 2mm	Ball screw Ø8 lead 1mm	Ball screw Ø8 lead 2mm	Ball screw Ø8 lead 1mm	Ball screw Ø8 lead 2mm	
	Rail	Circular Linear ball guiding						
	Stage material/Surface treatment	Stainless steel / Electroless nickel plating						
	Main unit weight	N : 0.97 Kg / C : 1.06 Kg		N : 1.1 Kg / C : 1.17 Kg		N : 1.24 Kg / C : 1.29 Kg		
	Coupling	FAMCS11.6-5*5						
	Accuracy level	P : Precision grade						
Wiring method	N : GMT Standard							
Precision specifications	Resolution (pulse)	Full / Half	2 µm / 1 µm	4 µm / 2 µm	2 µm / 1 µm	4 µm / 2 µm	2 µm / 1 µm	4 µm / 2 µm
	Maximum speed (full step)		20 mm / sec	40 mm / sec	20 mm / sec	40 mm / sec	20 mm / sec	40 mm / sec
	Positioning precision		5 µm				7 µm	
	Repeatability precision		±0.5 µm					
	Load capacity		10 Kgf					
	Missed step		1 µm					
	Parallelism		15 µm					
	Dynamic straightness		2 µm					
Dynamic parallelism		10 µm						
Electrical specifications	Motor	Type/Shaft numbers	5-phase stepper / □28 double shafts					
		Brand/ Model	Sanyo / SH5281-7211					
	Driver brand/Model	Please refer to motor / driver cross-reference table (page E3)						
	Connector	Stage side connector	15-pin male end connector D-SUB					
		Controller side connector	15-pin female end connector D-SUB (optional)					
		Origin sensor	Photoelectric sensor EE-SX14134					
		Limit sensor						
	Sensor	Origin approximation sensor	N/A					
	Power voltage	24V±10%						
	Control output	NPN open collector output under 24V 8mA						
	Output control	Testing (sensing) : output transistor OFF (closed)						

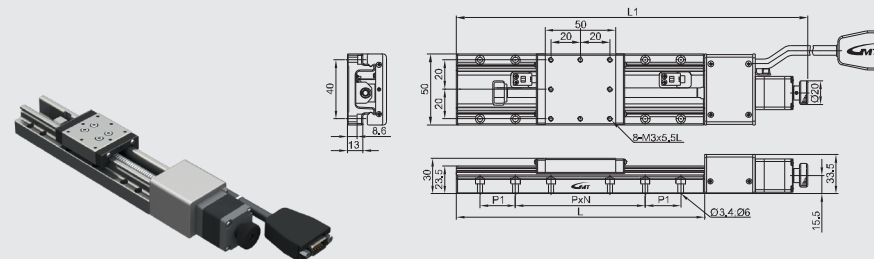
* In case HRS connection cable is required, please consult to your regional sales.

X axis



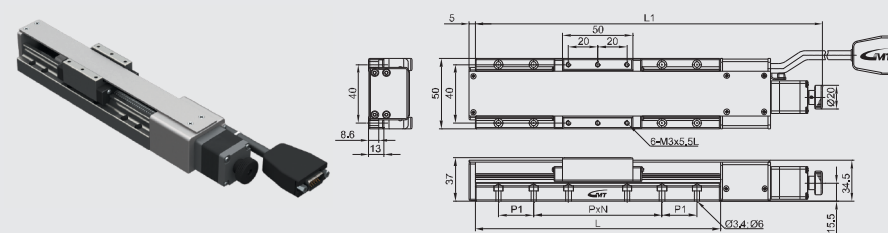
CXN50 / CXC50 series

CXN50□-S2PN-CD-P1



Stroke	L	L1	P	N	P1
30	110	197.5	40	1	20
50	120	217.5	40	3	N/A
75	145	242.5	40	3	N/A

CXC50□-S2PN-CD-P1



C72

Model description

CXN50 / CXC50 series

Material	Drive type	Accuracy level	Wiring method	Motor model	Connector type
S Stainless steel	2 Ball screw	P Precision grade	N GMT Standard	C 5-phase stepper X Not equipped	D D-SUB15 (VGA)

CXN 50 100 - S 2 P N - C D - P 1 - 2 C

Axis & serial numbers	Table size	Stroke	Ball screw pitch	Connecting cable (optional)	Driver (optional)
CXN X axis (w/o cover)	50 50*50mm	100 100mm	P1 1mm	Blank Not equipped	Blank Not equipped
CXC X axis (w/cover)		150 150mm	P2 2mm	2 2m cable	C Standard specified by GMT
		200 200mm	P4 4mm	4 4m cable	
				6 6m cable	

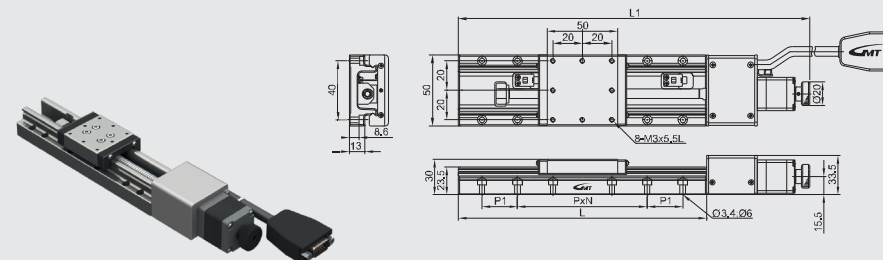
Model Number		CXN50100-S2PN-CD-P1		CXN50100-S2PN-CD-P2		CXN50150-S2PN-CD-P2		CXN50150-S2PN-CD-P4		CXN50200-S2PN-CD-P2		CXN50200-S2PN-CD-P4		
		CXC50100-S2PN-CD-P1		CXC50100-S2PN-CD-P2		CXC50150-S2PN-CD-P2		CXC50150-S2PN-CD-P4		CXC50200-S2PN-CD-P2		CXC50200-S2PN-CD-P4		
Mechanical specifications	Table size	50X50 mm												
	Travel stroke	100 mm				150 mm				200 mm				
	Drive type	Ball screw Ø8 lead 1mm	Ball screw Ø8 lead 2mm	Ball screw Ø8 lead 2mm	Ball screw Ø8 lead 4mm	Ball screw Ø8 lead 2mm	Ball screw Ø8 lead 4mm							
	Rail	Circular Linear ball guiding												
	Stage material/Surface treatment	Stainless steel / Electroless nickel plating												
	Main unit weight	N : 1.35 Kg / C : 1.39 Kg				N : 1.5 Kg / C : 1.82 Kg				N : 1.76 Kg / C : 2.02 Kg				
	Coupling	FAMCS11.6-5*5												
Precision specifications	Accuracy level	P : Precision grade												
	Wiring method	N : GMT Standard												
	Resolution (pulse)	Full / Half		2 µm / 1 µm		4 µm / 2 µm		2 µm / 1 µm		4 µm / 2 µm		4 µm / 2 µm		
	Maximum speed (full step)	20 mm / sec		40 mm / sec		20 mm / sec		40 mm / sec		20 mm / sec		40 mm / sec		
	Positioning precision	10 µm				15 µm								
	Repeatability precision					±0.5 µm								
	Load capacity					10 Kgf								
Electrical specifications	Missed step					1 µm								
	Parallelism					15 µm								
	Dynamic straightness					4 µm				6 µm				
	Dynamic parallelism					10 µm				15 µm				
	Motor	Type/Shaft numbers	5-phase stepper / □28 double shafts											
		Brand/ Model	Sanyo / SH5281-7211											
	Driver brand/Model	Please refer to motor / driver cross-reference table (page E3)												
Connector	Stage side connector	15-pin male end connector D-SUB												
	Controller side connector	15-pin female end connector D-SUB (optional)												
	Origin sensor	Photoelectric sensor EE-SX4134												
Sensor	Limit sensor													
	Origin approximation sensor	N/A												
	Power voltage	24V±10%												
	Control output	NPN open collector output under 24V 8mA												
	Output control	Testing (sensing) : output transistor OFF (closed)												

* GMT motorized stage is equipped with D-SUB connector as the standard one which is available to be changed to HRS or N/C on request as per reference stated on P.171
* In case HRS connection cable is required, please consult to your regional sales.

X axis

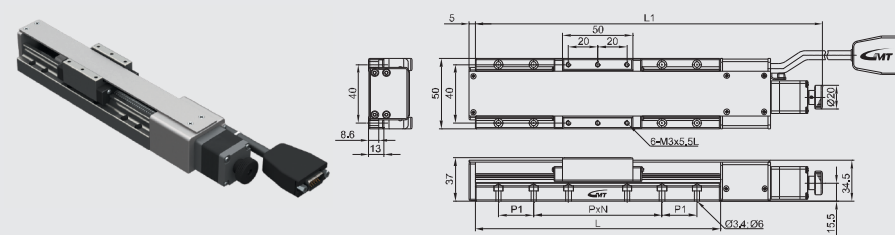


CXN50□-S2PN-CD-P1



Stroke	L	L1	P	N	P1
100	170	268	40	4	N/A
150	220	318	40	5	16
200	270	368	40	6	N/A

CXC50□-S2PN-CD-P1



Model description

CXN60 / CXC60 series

Material		Drive type		Accuracy level		Wiring method		Motor model		Connector type	
S	Stainless steel	2	Ball screw	P	Precision grade	N	GMT Standard	C	5-phase stepper	D	D-SUB15 (VGA)
								X	Not equipped		

CXN 60 30 - S 2 P N - C D - P1 - 2 C

Axis & serial numbers		Table size		Stroke		Ball screw pitch		Connecting cable (optional)		Driver (optional)	
CXN	X axis (w/o cover)	60	60*60mm	30	30mm	P1	1mm	Blank	Not equipped	Blank	Not equipped
CXC	X axis (w/cover)			50	50mm	P2	2mm	2	2m cable	C	Standard specified by GMT
				75	75mm			4	4m cable		
								6	6m cable		

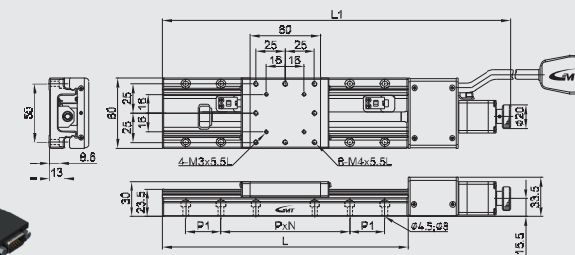
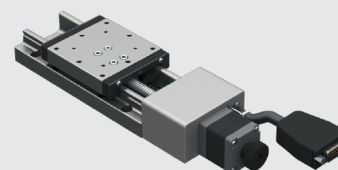
Model Number		CXN6030-S2PN-CD-P1	CYN6030-S2PN-CD-P2	CXN6050-S2PN-CD-P1	CYN6050-S2PN-CD-P2	CXN6075-S2PN-CD-P1	CYN6075-S2PN-CD-P2
Mechanical specifications	Table size	60X60 mm					
	Travel stroke	30 mm		50 mm		75 mm	
	Drive type	Ball screw Ø8 lead 1mm	Ball screw Ø8 lead 2mm	Ball screw Ø8 lead 1mm	Ball screw Ø8 lead 2mm	Ball screw Ø8 lead 1mm	Ball screw Ø8 lead 2mm
	Rail	Circular Linear ball guiding					
	Stage material/Surface treatment	Stainless steel / Electroless nickel plating					
	Main unit weight	N : 1.1Kg / C : 1.29 Kg		N : 1.19 Kg / C : 1.33 Kg		N : 1.3 Kg / C : 1.44 Kg	
	Coupling	FAMCS11.6-5*5					
Precision specifications	Accuracy level	P : Precision grade					
	Wiring method	N : GMT Standard					
	Resolution (pulse)	Full / Half		2 µm / 1 µm		4 µm / 2 µm	
	Maximum speed (full step)	20 mm / sec		40 mm / sec		20 mm / sec	
	Positioning precision	5 µm		4 µm / 2 µm		2 µm / 1 µm	
	Repeatability precision			±0.5 µm		7 µm	
	Load capacity			14 Kg			
	Missed step			1 µm			
	Parallelism			20 µm			
	Dynamic straightness			2 µm			
Dynamic parallelism			10 µm				
Electrical specifications	Motor	5-phase stepper / □28 double shafts					
		Sanyo / SH5281-7211					
	Driver brand/Model	Please refer to motor / driver cross-reference table (page E3)					
	Connector	15-pin male end connector D-SUB					
		15-pin female end connector D-SUB (optional)					
		Photoelectric sensor EE-SX4134					
	Sensor	N/A					
		24V±10%					
		NPN open collector output under 24V 8mA					
	Testing (sensing) : output transistor OFF (closed)						

* In case HRS connection cable is required, please consult to your regional sales.

X axis

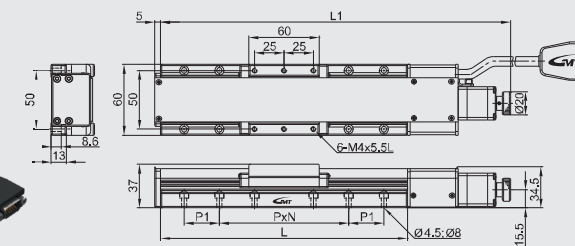
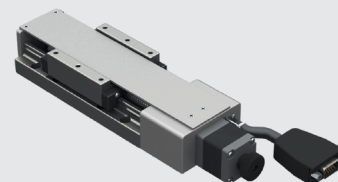


CXN60□-S2PN-CD-P1



Stroke	L	L1	P	N	P1
30	120	209	50	1	25
50	140	229	50	1	25
75	165	254	50	3	N/A

CXC60□-S2PN-CD-P1



Model description

CXN60 / CXC60 series

Material		Drive type		Accuracy level		Wiring method		Motor model		Connector type	
S	Stainless steel	2	Ball screw	P	Precision grade	N	GMT Standard	C	5-phase stepper	D	D-SUB15 (VGA)
								X	Not equipped		

CXN 60 100 - S 2 P N - C D - P1 - 2 C

Axis & serial numbers		Table size		Stroke		Ball screw pitch		Connecting cable (optional)		Driver (optional)	
CXN	X axis (w/o cover)	60	60*60mm	100	100mm	P1	1mm	Blank	Not equipped	Blank	Not equipped
CXC	X axis (w/cover)			150	150mm	P2	2mm	2	2m cable	C	Standard specified by CMT
				200	200mm	P4	4mm	4	4m cable		
								6	6m cable		

Model Number		CXN60100S2PW-CD-P1	CXN60100S2PW-CD-P2	CXN60150S2PW-CD-P2	CXN60150S2PW-CD-P4	CXN60200S2PW-CD-P2	CXN60200S2PW-CD-P4	
		CXN60100S2PW-CD-P1	CXN60100S2PW-CD-P2	CXN60150S2PW-CD-P2	CXN60150S2PW-CD-P4	CXN60200S2PW-CD-P2	CXN60200S2PW-CD-P4	
Mechanical specifications	Table size	60X60 mm						
	Travel stroke	100 mm	150 mm			200 mm		
	Drive type	Ball screw Ø8 lead 1mm	Ball screw Ø8 lead 2mm	Ball screw Ø8 lead 2mm	Ball screw Ø8 lead 4mm	Ball screw Ø8 lead 2mm	Ball screw Ø8 lead 4mm	
	Rail	Circular Linear ball guiding						
	Stage material/Surface treatment	Stainless steel / Electroless nickel plating						
	Main unit weight	N : 1.47 Kg / C : 1.61 Kg		N : 1.8 Kg / C : 1.94 Kg		N : 2 Kg / C : 2.14 Kg		
	Coupling	FAMCS11.6-5*5						
Precision specifications	Accuracy level	P : Precision grade						
	Wiring method	N : GMT Standard						
	Resolution (pulse)	Full / Half	2 µm / 1 µm	4 µm / 2 µm	4 µm / 2 µm	8 µm / 4 µm	4 µm / 2 µm	8 µm / 4 µm
	Maximum speed (full step)		20 mm / sec	40 mm / sec	40 mm / sec	80 mm / sec	40 mm / sec	80 mm / sec
	Positioning precision		10 µm		15 µm			
	Repeatability precision		±0.5 µm					
	Load capacity		14 Kgf					
	Missed step		1 µm					
	Parallelism		20 µm					
	Dynamic straightness		4 µm					6 µm
Dynamic parallelism		10 µm					15 µm	
Electrical specifications	Motor	Type/Shaft numbers	5-phase stepper / □28 double shafts					
		Brand/ Model	Sanyo / SH5281-7211					
	Driver brand/Model	Please refer to motor / driver cross-reference table (page E3)						
	Connector	Stage side connector	15-pin male end connector D-SUB					
		Controller side connector	15-pin female end connector D-SUB (optional)					
		Origin sensor	Photoelectric sensor EE-SX1434					
	Sensor	Origin approximation sensor	N/A					
		Power voltage	24V±10%					
Control output		NPN open collector output under 24V 8mA						
Output control		Testing (sensing) : output transistor OFF (closed)						

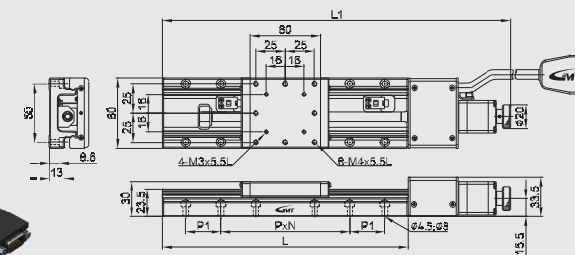
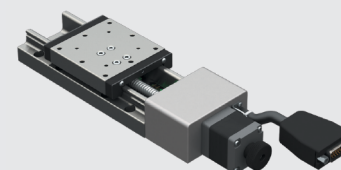
* In case HRS connection cable is required, please consult to your regional sales.

X axis



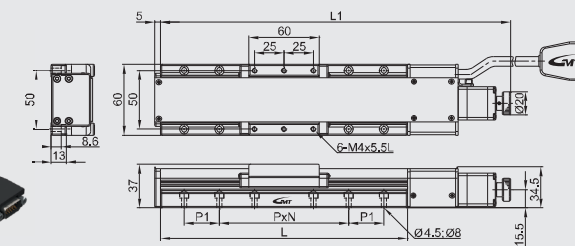
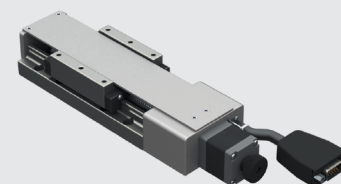
CXN60 / CXC60 series

CXN60□-S2PN-CD-P1



Stroke	L	L1	P	N	P1
100	190	298,5	50	3	N/A
150	240	348,5	25	4	50
200	290	398.5	50	5	N/A

CXC60□-S2PN-CD-P1



Model description

CXN60 / CXC60 series

Material	Drive type	Accuracy level	Wiring method	Motor model	Connector type
S Stainless steel	2 Ball screw	P Precision grade	N GMT Standard	C 5-phase stepper X Not equipped	D D-SUB15 (VGA)

CXN 60 250 - S 2 P N - C D - P 2 - 2 C

Axis & serial numbers	Table size	Stroke	Ball screw pitch	Connecting cable (optional)	Driver (optional)
CXN X axis (w/o cover)	60 60*60mm	250 250mm	P2 2mm	Blank Not equipped	Blank Not equipped
CXC X axis (w/cover)		300 300mm	P4 4mm	2 2m cable 4 4m cable 6 6m cable	C Standard specified by GMT

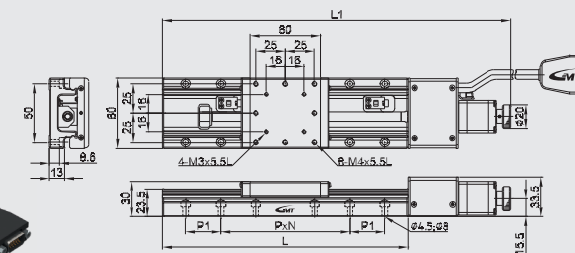
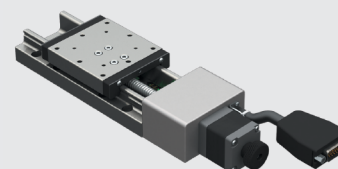
Model Number		CXN60250-S2PN-CD-P2	CXN60250-S2PN-CD-P4	CXN60300-S2PN-CD-P2	CXN60300-S2PN-CD-P4	
		CXC60250-S2PN-CD-P2	CXC60250-S2PN-CD-P4	CXC60300-S2PN-CD-P2	CXC60300-S2PN-CD-P4	
Mechanical specifications	Table size	60X60 mm				
	Travel stroke	250 mm		300 mm		
	Drive type	Ball screw Ø8 lead 2mm	Ball screw Ø8 lead 4mm	Ball screw Ø8 lead 2mm	Ball screw Ø8 lead 4mm	
	Rail	Circular Linear ball guiding				
	Stage material/Surface treatment	Stainless steel / Electroless nickel plating				
	Main unit weight	N : 2.3 Kg / C : 2.44 Kg		N : 2.6 Kg / C : 2.74 Kg		
	Coupling	FAMCS11.6-5*5				
Accuracy level	P : Precision grade					
Wiring method	N : GMT Standard					
Precision specifications	Resolution (pulse)	Full / Half	4 µm / 2 µm	8 µm / 4 µm	4 µm / 2 µm	8 µm / 4µm
	Maximum speed (full step)		40 mm / sec	80 mm / sec	40 mm / sec	80 mm / sec
	Positioning precision		25 µm			
	Repeatability precision		±0.5 µm			
	Load capacity		14 Kgf			
	Missed step		1 µm			
	Parallelism		20 µm			
	Dynamic straightness		6 µm			
	Dynamic parallelism		25 µm			
	Electrical specifications	Motor	Type/Shaft numbers	5-phase stepper / □28 double shafts		
		Brand/ Model	Sanyo / SH5281-7211			
		Driver brand/Model	Please refer to motor / driver cross-reference table (page E3)			
Connector		Stage side connector	15-pin male end connector D-SUB			
		Controller side connector	15-pin female end connector D-SUB (optional)			
		Origin sensor	Photoelectric sensor EE-SX4134			
Sensor		Limit sensor	N/A			
		Origin approximation sensor	24V±10%			
		Power voltage	NPN open collector output under 24V 8mA			
		Control output	Testing (sensing) : output transistor OFF (closed)			

* GMT motorized stage is equipped with D-SUB connector as the standard one which is available to be changed to HRS or N/C on request as per reference stated on P.171
 * In case HRS connection cable is required, please consult to your regional sales.

X axis

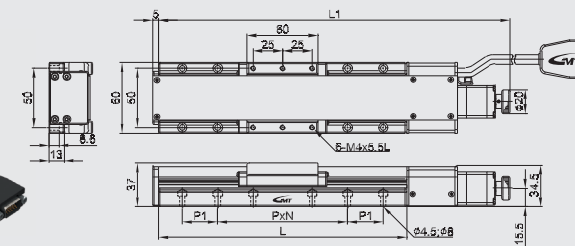
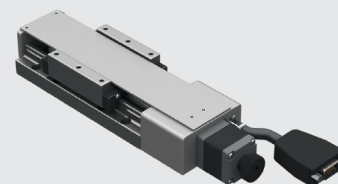


CXN60□-S2PN-CD-P1



Stroke	L	L1	P	N	P1
250	340	448.5	50	5	N/A
300	390	498.5	50	7	N/A

CXC60□-S2PN-CD-P1



Model description

CXN80 / CXC80 series

Material	Drive type	Accuracy level	Wiring method	Motor model	Connector type
S Stainless steel	2 Ball screw	P Precision grade	N GMT Standard	C 5-phase stepper X Not equipped	D D-SUB15 (VGA)

CXN 80 30 - S 2 P N - C D - P1 - 2 C

Axis & serial numbers	Table size	Stroke	Ball screw pitch	Connecting cable (optional)	Driver (optional)
CXN X axis (w/o cover)	80 80*80mm	30 30mm	P1 1mm	Blank Not equipped	Blank Not equipped
CXC X axis (w/cover)		50 50mm	P2 2mm	2 2m cable	C Standard specified by GMT
		75 75mm		4 4m cable	
				6 6m cable	

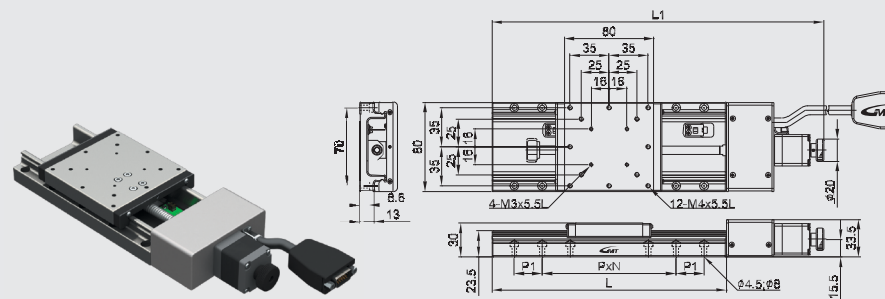
Model Number		CYN8030-S2PN-CD-P1		CYN8050-S2PN-CD-P1		CYN8075-S2PN-CD-P1		CYN8075-S2PN-CD-P2	
		CXC8030-S2PN-CD-P1		CXC8050-S2PN-CD-P1		CXC8075-S2PN-CD-P1		CXC8075-S2PN-CD-P2	
Mechanical specifications	Table size	80X80 mm							
	Travel stroke	30 mm				75 mm			
	Drive type	Ball screw Ø8 lead 1mm		Ball screw Ø8 lead 2mm		Ball screw Ø8 lead 1mm		Ball screw Ø8 lead 2mm	
	Rail	Circular Linear ball guiding							
	Stage material/Surface treatment	Stainless steel / Electroless nickel plating							
	Main unit weight	N : 1.5 Kg / C : 1.79 Kg		N : 1.68 Kg / C : 1.86 Kg		N : 1.84 Kg / C : 2.03 Kg			
Precision specifications	Coupling	FAMCS11.6-5°5							
	Accuracy level	P : Precision grade							
	Wiring method	N : GMT Standard							
	Resolution (pulse)	Full / Half		2 µm / 1 µm		4 µm / 2 µm		2 µm / 1 µm	
	Maximum speed (full step)	20 mm / sec		40 mm / sec		20 mm / sec		40 mm / sec	
	Positioning precision	5 µm				7 µm			
Electrical specifications	Repeatability precision					±0.5 µm			
	Load capacity					16 Kgf			
	Missed step					1 µm			
	Parallelism					20 µm			
	Dynamic straightness					2 µm			
	Dynamic parallelism					10 µm			
Motor	Type/Shaft numbers	5-phase stepper / □28 double shafts							
	Brand/ Model	Sanyo / SH5281-7211							
	Driver brand/Model	Please refer to motor / driver cross-reference table (page E3)							
	Stage side connector	15-pin male end connector D-SUB							
	Controller side connector	15-pin female end connector D-SUB (optional)							
	Origin sensor	Photoelectric sensor EE-SX4134							
	Limit sensor	N/A							
	Origin approximation sensor	N/A							
	Power voltage	24V±10%							
Sensor	Control output	NPN open collector output under 24V 8mA							
	Output control	Testing (sensing) : output transistor OFF (closed)							

* GMT motorized stage is equipped with D-SUB connector as the standard one which is available to be changed to HRS or N/C on request as per reference stated on P.171
* In case HRS connection cable is required, please consult to your regional sales.

X axis

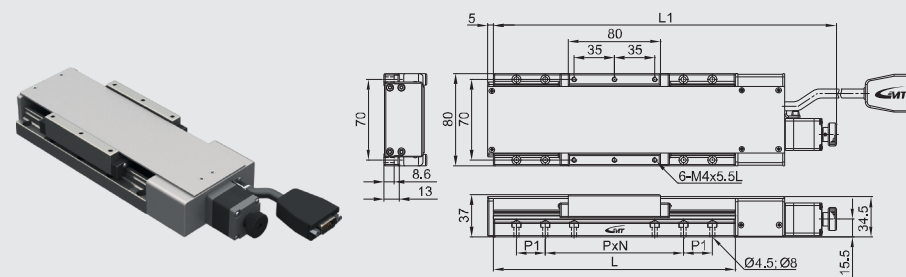


CXN80□-S2PN-CD-P1



Stroke	L	L1	P	N	P1
30	140	229	70	1	25
50	160	247.5	35	4	35
75	185	272.5	35	4	35

CXC80□-S2PN-CD-P1



Model description

CXN80 / CXC80 series

Material		Drive type		Accuracy level		Wiring method		Motor model		Connector type	
S	Stainless steel	2	Ball screw	P	Precision grade	N	GMT Standard	C	5-phase stepper	D	D-SUB15 (VGA)
								X	Not equipped		

CXN 80 100 - S 2 P N - C D - P1 - 2 C

Axis & serial numbers		Table size		Stroke		Ball screw pitch		Connecting cable (optional)		Driver (optional)	
CXN	X axis (w/o cover)	80	80*80mm	100	100mm	P1	1mm	Blank	Not equipped	Blank	Not equipped
CXC	X axis (w/cover)			150	150mm	P2	2mm	2	2m cable	C	Standard specified by GMT
				200	200mm	P4	4mm	4	4m cable		
								6	6m cable		

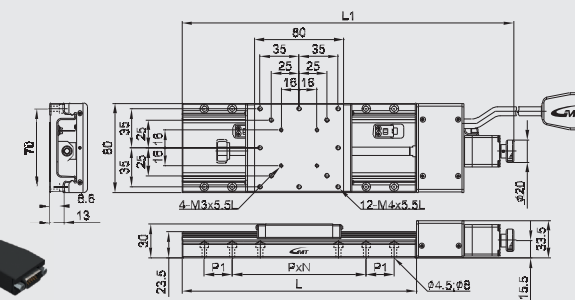
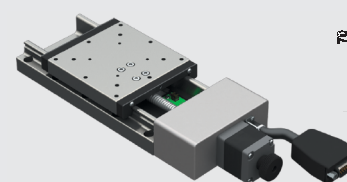
Model Number		CXN80100-S2PW-CD-P1	CXN80100-S2PW-CD-P2	CXN80150-S2PW-CD-P1	CXN80150-S2PW-CD-P2	CXN80200-S2PW-CD-P1	CXN80200-S2PW-CD-P2	CXN80250-S2PW-CD-P1	CXN80250-S2PW-CD-P2
Mechanical specifications	Table size	100 mm			80X80 mm			150 mm	
	Travel stroke	100 mm			150 mm			200 mm	
	Drive type	Ball screw Ø8 lead 1mm	Ball screw Ø8 lead 2mm	Ball screw Ø8 lead 2mm	Ball screw Ø8 lead 4mm	Ball screw Ø8 lead 4mm	Ball screw Ø8 lead 2mm	Ball screw Ø8 lead 4mm	
	Rail	Circular Linear ball guiding							
	Stage material/Surface treatment	Stainless steel / Electroless nickel plating							
	Main unit weight	N : 2.02 Kg / C : 2.2 Kg		N : 2.32 Kg / C : 2.5 Kg			N : 2.6 Kg / C : 2.78 Kg		
	Coupling	FAMCS11.6-5*5							
	Accuracy level	P : Precision grade							
Precision specifications	Wiring method	N : GMT Standard							
	Resolution (pulse)	Full / Half	2 µm / 1 µm	4 µm / 2 µm	4 µm / 2 µm	8 µm / 4 µm	4 µm / 2 µm	8 µm / 4 µm	
	Maximum speed (full step)		20 mm / sec	40 mm / sec	40 mm / sec	80 mm / sec	40 mm / sec	80 mm / sec	
	Positioning precision		10 µm		15 µm				
	Repeatability precision				±0.5 µm				
	Load capacity				16 Kg				
	Missed step				1 µm				
	Parallelism				20 µm				
Electrical specifications	Dynamic straightness		4 µm		6 µm				
	Dynamic parallelism		10 µm		15 µm				
	Motor	Type/Shaft numbers	5-phase stepper / □28 double shafts						
		Brand/ Model	Sanyo / SH5281-7211						
	Driver brand/Model	Please refer to motor / driver cross-reference table (page E3)							
	Connector	Stage side connector	15-pin male end connector D-SUB						
		Controller side connector	15-pin female end connector D-SUB (optional)						
		Origin sensor	Photoelectric sensor EE-SX4134						
Sensor		Limit sensor							
		Origin approximation sensor	N/A						
		Power voltage	24V±10%						
		Control output	NPN open collector output under 24V 8mA						
	Output control	Testing (sensing) : output transistor OFF (closed)							

* In case HRS connection cable is required, please consult to your regional sales.

X axis

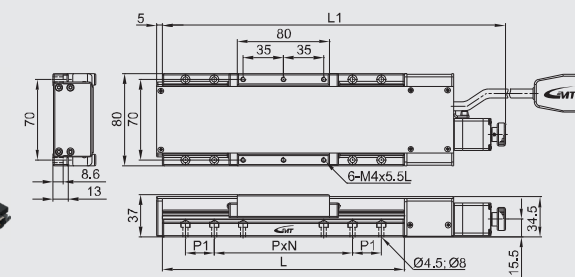
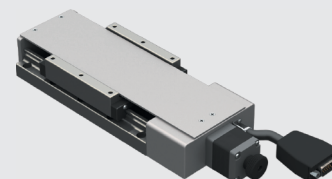


CXN80□-S2PN-CD-P1



Stroke	L	L1	P	N	P1
100	210	317.5	70	1	35
150	260	367.5	70	3	N/A
200	310	417.5	70	3	35

CXC80□-S2PN-CD-P1



Model description

CXN80 / CXC80 series

Material		Drive type		Accuracy level		Wiring method		Motor model		Connector type	
S	Stainless steel	2	Ball screw	P	Precision grade	N	GMT Standard	C	5-phase stepper	D	D-SUB15 (VGA)
								X	Not equipped		

CXN 80 250 - S 2 P N - C D - P2 - 2 C

Axis & serial numbers		Table size		Stroke		Ball screw pitch		Connecting cable (optional)		Driver (optional)	
CXN	X axis (w/o cover)	80	80*80mm	250	250mm	P2	2mm	Blank	Not equipped	Blank	Not equipped
CXC	X axis (w/cover)			300	300mm	P4	4mm	2	2m cable	C	Standard specified by GMT
								4	4m cable		
								6	6m cable		

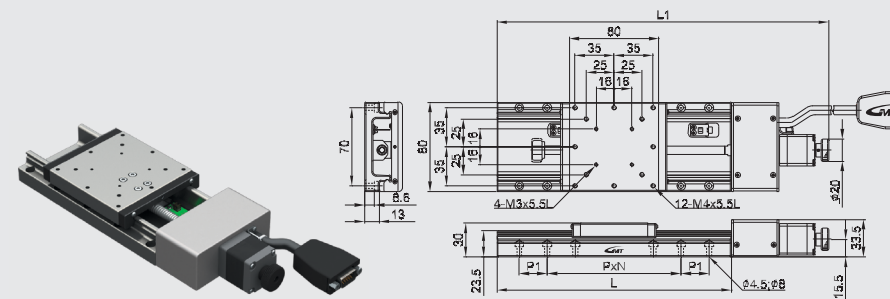
Model Number		CXN80250-S2PN-CD-P2	CXN80250-S2PN-CD-P4	CXN80300-S2PN-CD-P2	CXN80300-S2PN-CD-P4	
		CXC80250-S2PN-CD-P2	CXC80250-S2PN-CD-P4	CXC80300-S2PN-CD-P2	CXC80300-S2PN-CD-P4	
Mechanical specifications	Table size	80X80 mm				
	Travel stroke	250 mm		300 mm		
	Drive type	Ball screw Ø8 lead 2mm	Ball screw Ø8 lead 4mm	Ball screw Ø8 lead 2mm	Ball screw Ø8 lead 4mm	
	Rail	Circular Linear ball guiding				
	Stage material/Surface treatment	Stainless steel / Electroless nickel plating				
	Main unit weight	N : 2.9 Kg / C : 3.08 Kg		N : 3.2 Kg / C : 3.38 Kg		
	Coupling	FAMCS11.6-5*5				
	Accuracy level	P : Precision grade				
Wiring method	N : GMT Standard					
Precision specifications	Resolution (pulse)	Full / Half	4 µm / 2 µm	8 µm / 4 µm	4 µm / 2 µm	8 µm / 4 µm
	Maximum speed (full step)		40 mm / sec	80 mm / sec	40 mm / sec	80 mm / sec
	Positioning precision		25 µm			
	Repeatability precision		±0.5 µm			
	Load capacity		16 Kg			
	Missed step		1 µm			
	Parallelism		20 µm			
	Dynamic straightness		6 µm			
	Dynamic parallelism		25 µm			
	Electrical specifications	Motor	Type/Shaft numbers	5-phase stepper / □28 double shafts		
		Brand/ Model	Sanyo / SH5281-7211			
Driver brand/Model			Please refer to motor / driver cross-reference table (page E3)			
Connector		Stage side connector	15-pin male end connector D-SUB			
		Controller side connector	15-pin female end connector D-SUB (optional)			
		Origin sensor	Photoelectric sensor EE-SX4134			
		Limit sensor				
Sensor		Origin approximation sensor	N/A			
		Power voltage	24V±10%			
		Control output	NPN open collector output under 24V 8mA			
	Output control	Testing (sensing) : output transistor OFF (closed)				

* In case HRS connection cable is required, please consult to your regional sales.

X axis



CXN80□-S2PN-CD-P1



Stroke	L	L1	P	N	P1
250	360	467.5	70	4	35
300	410	517.5	70	5	N/A

CXC80□-S2PN-CD-P1

