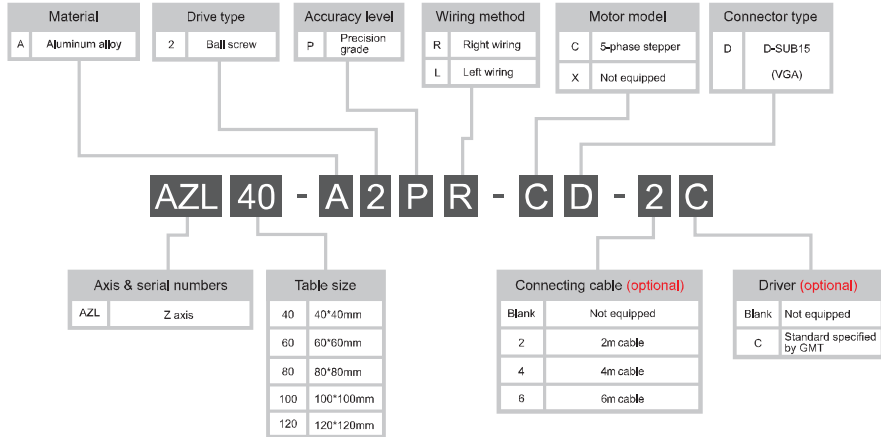


Model description

AZL series

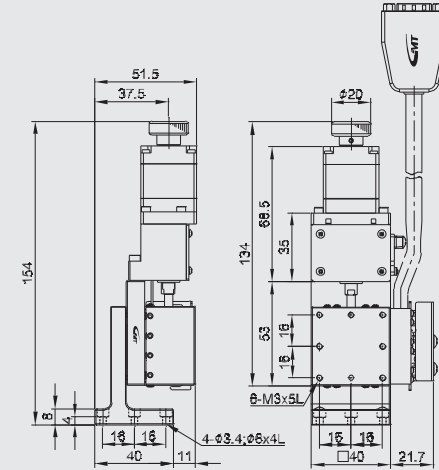
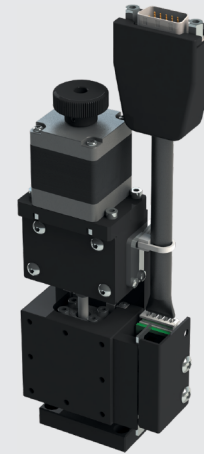


Model Number	AZL40-A2PR-CD	AZL60-A2PR-CD	AZL80-A2PR-CD	AZL100-A2PR-CD	AZL120-A2PR-CD																																																																		
Mechanical specifications	<table border="1"> <tr><td>Table size</td><td>40X40 mm</td><td>60X60 mm</td><td>80X80 mm</td><td>100X100 mm</td><td>120X120 mm</td></tr> <tr><td>Travel stroke</td><td>15 mm</td><td>20 mm</td><td>30 mm</td><td>40 mm</td><td>70 mm</td></tr> <tr><td>Drive type</td><td colspan="5">Ball screw Ø6 lead 1mm</td></tr> <tr><td>Rail</td><td colspan="5">Crossed-roller guiding</td></tr> <tr><td>Stage material/Surface treatment</td><td colspan="5">Aluminum alloy / Black anodized</td></tr> <tr><td>Main unit weight</td><td>0.45 Kg</td><td>1.01 Kg</td><td>3.1 Kg</td><td>2.67 Kg</td><td>4.2 Kg</td></tr> <tr><td>Coupling</td><td>FAMMS12-3*5</td><td>FAMS16-5*5</td><td colspan="3">FAMMS16-5*5</td></tr> <tr><td>Accuracy level</td><td colspan="5">P : Precision grade</td></tr> <tr><td>Wiring method</td><td colspan="5">R : Right wiring</td></tr> </table>					Table size	40X40 mm	60X60 mm	80X80 mm	100X100 mm	120X120 mm	Travel stroke	15 mm	20 mm	30 mm	40 mm	70 mm	Drive type	Ball screw Ø6 lead 1mm					Rail	Crossed-roller guiding					Stage material/Surface treatment	Aluminum alloy / Black anodized					Main unit weight	0.45 Kg	1.01 Kg	3.1 Kg	2.67 Kg	4.2 Kg	Coupling	FAMMS12-3*5	FAMS16-5*5	FAMMS16-5*5			Accuracy level	P : Precision grade					Wiring method	R : Right wiring																
Table size	40X40 mm	60X60 mm	80X80 mm	100X100 mm	120X120 mm																																																																		
Travel stroke	15 mm	20 mm	30 mm	40 mm	70 mm																																																																		
Drive type	Ball screw Ø6 lead 1mm																																																																						
Rail	Crossed-roller guiding																																																																						
Stage material/Surface treatment	Aluminum alloy / Black anodized																																																																						
Main unit weight	0.45 Kg	1.01 Kg	3.1 Kg	2.67 Kg	4.2 Kg																																																																		
Coupling	FAMMS12-3*5	FAMS16-5*5	FAMMS16-5*5																																																																				
Accuracy level	P : Precision grade																																																																						
Wiring method	R : Right wiring																																																																						
Precision specifications	<table border="1"> <tr><td>Resolution (pulse)</td><td>Full / Half</td><td colspan="3">2 µm / 1 µm</td><td></td></tr> <tr><td>Maximum speed (full step)</td><td></td><td colspan="3">10 mm / sec</td><td></td></tr> <tr><td>Positioning precision</td><td></td><td colspan="3">5 µm</td><td>10 µm</td></tr> <tr><td>Repeatability precision</td><td></td><td colspan="3">±0.5 µm</td><td></td></tr> <tr><td>Load capacity</td><td>4 Kgf</td><td colspan="3">10 Kgf</td><td>12 Kgf</td></tr> <tr><td>Missed step</td><td colspan="5">1 µm</td></tr> <tr><td>Parallelism</td><td colspan="3">20 µm</td><td colspan="2">2 µm</td></tr> <tr><td>Dynamic straightness</td><td colspan="5">6.6 µm</td></tr> <tr><td>Dynamic parallelism</td><td colspan="3">6.6 µm</td><td colspan="2">10 µm</td></tr> </table>					Resolution (pulse)	Full / Half	2 µm / 1 µm				Maximum speed (full step)		10 mm / sec				Positioning precision		5 µm			10 µm	Repeatability precision		±0.5 µm				Load capacity	4 Kgf	10 Kgf			12 Kgf	Missed step	1 µm					Parallelism	20 µm			2 µm		Dynamic straightness	6.6 µm					Dynamic parallelism	6.6 µm			10 µm													
Resolution (pulse)	Full / Half	2 µm / 1 µm																																																																					
Maximum speed (full step)		10 mm / sec																																																																					
Positioning precision		5 µm			10 µm																																																																		
Repeatability precision		±0.5 µm																																																																					
Load capacity	4 Kgf	10 Kgf			12 Kgf																																																																		
Missed step	1 µm																																																																						
Parallelism	20 µm			2 µm																																																																			
Dynamic straightness	6.6 µm																																																																						
Dynamic parallelism	6.6 µm			10 µm																																																																			
Electrical specifications	<table border="1"> <tr><td>Motor</td><td>Type/Shaft numbers</td><td colspan="2">5-phase stepper / □28 double shafts</td><td colspan="2">5-phase stepper / □42 double shafts</td></tr> <tr><td></td><td>Brand/ Model</td><td colspan="2">Sanyo / SH5281-7211</td><td colspan="2">Sanyo / 103F5510-8211</td></tr> <tr><td>Driver brand/Model</td><td colspan="5">Please refer to motor / driver cross-reference table (page E3)</td></tr> <tr><td>Stage side connector</td><td colspan="5">15-pin male end connector D-SUB</td></tr> <tr><td>Controller side connector</td><td colspan="5">15-pin female end connector D-SUB (optional)</td></tr> <tr><td>Origin sensor</td><td colspan="5">Photoelectric sensor EE-SX4134</td></tr> <tr><td>Limit sensor</td><td colspan="5">Photoelectric sensor EE-SX912-R</td></tr> <tr><td>Origin approximation sensor</td><td colspan="2">N / A</td><td colspan="3">Photoelectric sensor EE-SX912-R</td></tr> <tr><td>Power voltage</td><td colspan="5">24V±10%</td></tr> <tr><td>Control output</td><td colspan="5">NPN open collector output under 24V 8mA</td></tr> <tr><td>Output control</td><td colspan="5">Testing (sensing) : output transistor OFF (closed)</td></tr> </table>					Motor	Type/Shaft numbers	5-phase stepper / □28 double shafts		5-phase stepper / □42 double shafts			Brand/ Model	Sanyo / SH5281-7211		Sanyo / 103F5510-8211		Driver brand/Model	Please refer to motor / driver cross-reference table (page E3)					Stage side connector	15-pin male end connector D-SUB					Controller side connector	15-pin female end connector D-SUB (optional)					Origin sensor	Photoelectric sensor EE-SX4134					Limit sensor	Photoelectric sensor EE-SX912-R					Origin approximation sensor	N / A		Photoelectric sensor EE-SX912-R			Power voltage	24V±10%					Control output	NPN open collector output under 24V 8mA					Output control	Testing (sensing) : output transistor OFF (closed)				
Motor	Type/Shaft numbers	5-phase stepper / □28 double shafts		5-phase stepper / □42 double shafts																																																																			
	Brand/ Model	Sanyo / SH5281-7211		Sanyo / 103F5510-8211																																																																			
Driver brand/Model	Please refer to motor / driver cross-reference table (page E3)																																																																						
Stage side connector	15-pin male end connector D-SUB																																																																						
Controller side connector	15-pin female end connector D-SUB (optional)																																																																						
Origin sensor	Photoelectric sensor EE-SX4134																																																																						
Limit sensor	Photoelectric sensor EE-SX912-R																																																																						
Origin approximation sensor	N / A		Photoelectric sensor EE-SX912-R																																																																				
Power voltage	24V±10%																																																																						
Control output	NPN open collector output under 24V 8mA																																																																						
Output control	Testing (sensing) : output transistor OFF (closed)																																																																						

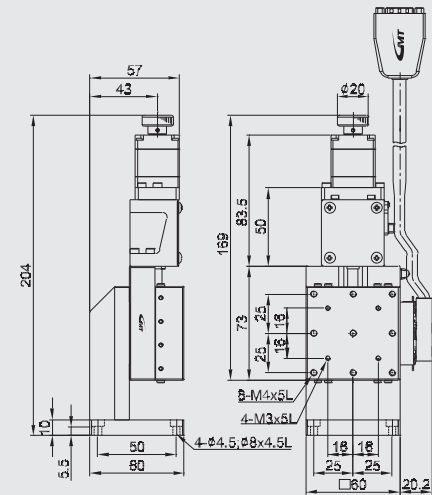
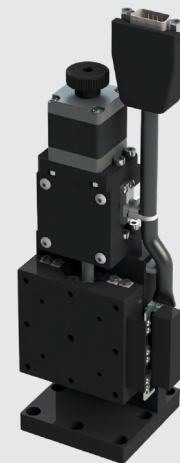
* Left or Right wiring is referred to the Z-axis stage face is present.
* GMT motorized stage is equipped with D-SUB connector as the standard one which is available to be changed to HRS or NJC on request as per reference stated on P.171
* In case HRS connection cable is required, please consult to your regional sales.



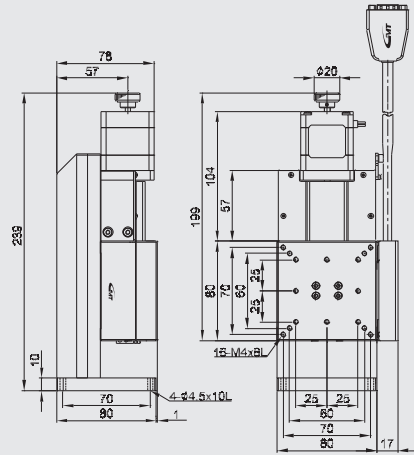
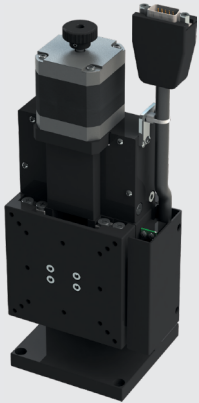
AZL40-A2PR-CD



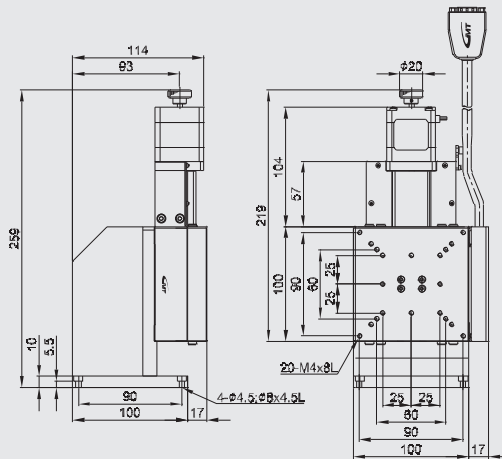
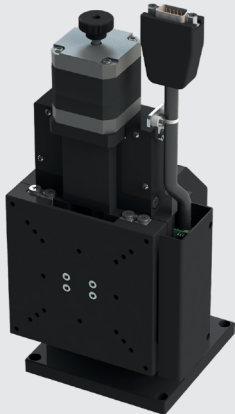
AZL60-A2PR-CD



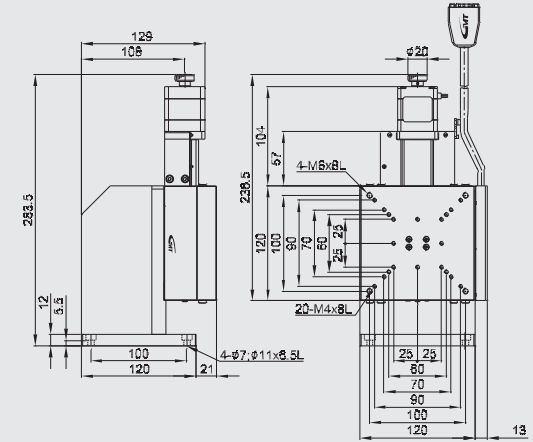
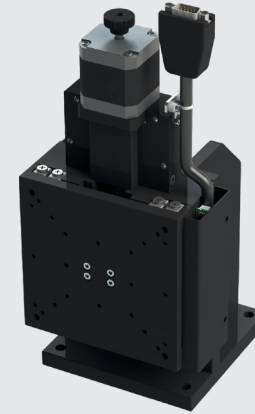
AZL80-A2PR-CD



AZL100-A2PR-CD



AZL120-A2PR-CD



Application examples

