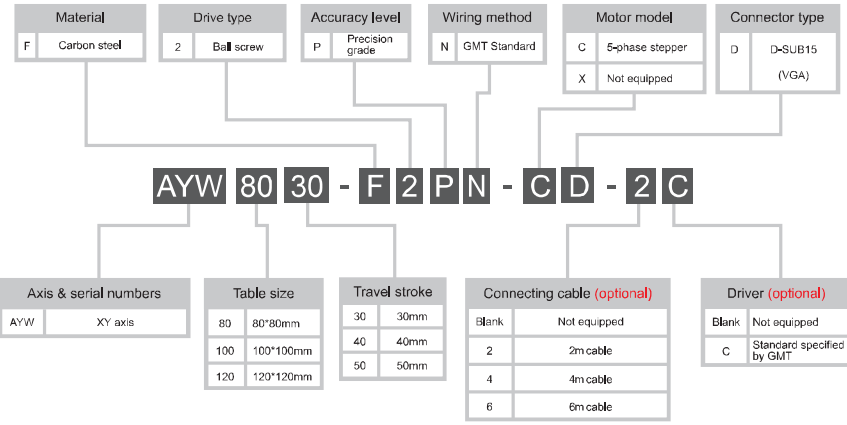


Model description

AYW series



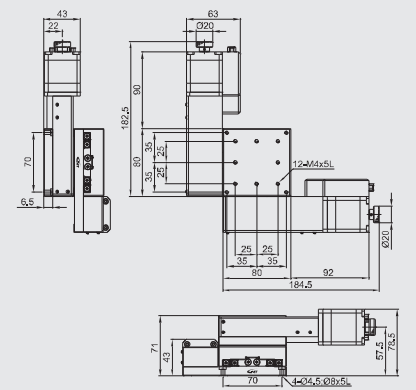
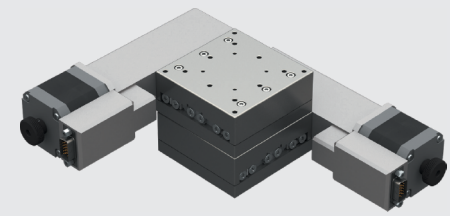
Model Number	AYW8030-F2PN-CD	AYW10040-F2PN-CD	AYW12050-F2PN-CD
Mechanical specifications	Table size 80X80 mm Travel stroke 30 mm Drive type Ball screw Ø8 lead 1 mm Rail Crossed-roller guiding Stage material/Surface treatment Carbon steel / Electroless nickel plating Main unit weight 5.6 Kg Coupling FAMCS11,6-5*5 Accuracy level P : Precision grade Wiring method N : GMT Standard	Table size 100X100 mm Travel stroke 40 mm Drive type Ball screw Ø8 lead 1 mm Rail Crossed-roller guiding Stage material/Surface treatment Carbon steel / Electroless nickel plating Main unit weight 9.6 Kg Coupling FAMCS11,6-5*5 Accuracy level P : Precision grade Wiring method N : GMT Standard	Table size 120X120 mm Travel stroke 50 mm Drive type Ball screw Ø8 lead 1 mm Rail Crossed-roller guiding Stage material/Surface treatment Carbon steel / Electroless nickel plating Main unit weight 16.8 Kg Coupling FAMCS11,6-5*5 Accuracy level P : Precision grade Wiring method N : GMT Standard
Precision specifications	Resolution (pulse) Full / Half Maximum speed (full step) 10 mm / sec Positioning precision 5 µm Repeatability precision ±0.5 µm Load capacity 45 Kgf Missed step 1 µm Parallelism 20 µm Dynamic straightness 2 µm Dynamic parallelism 10 µm	Resolution (pulse) Full / Half Maximum speed (full step) 10 mm / sec Positioning precision 5 µm Repeatability precision ±0.5 µm Load capacity 55 Kgf Missed step 1 µm Parallelism 20 µm Dynamic straightness 2 µm Dynamic parallelism 10 µm	Resolution (pulse) Full / Half Maximum speed (full step) 10 mm / sec Positioning precision 10 µm Repeatability precision ±0.5 µm Load capacity 65 Kgf Missed step 1 µm Parallelism 20 µm Dynamic straightness 2 µm Dynamic parallelism 10 µm
Electrical specifications	Motor Type/Shaft numbers 5-phase stepper / □42 double shafts Brand / Model Sanyo / 103F5510-8211 Driver brand/Model Please refer to motor / driver cross-reference table (page E3) Connector Stage side connector 15-pin male end connector D-SUB Controller side connector 15-pin female end connector D-SUB (optional) Sensor Origin sensor Photoelectric sensor EE-SX4134 Limit sensor Origin approximation sensor Power voltage 24V±10% Control output NPN open collector output under 24V 8mA Output control Testing (sensing) : output transistor OFF (closed)	Motor Type/Shaft numbers 5-phase stepper / □42 double shafts Brand / Model Sanyo / 103F5510-8211 Driver brand/Model Please refer to motor / driver cross-reference table (page E3) Connector Stage side connector 15-pin male end connector D-SUB Controller side connector 15-pin female end connector D-SUB (optional) Sensor Origin sensor Photoelectric sensor EE-SX4134 Limit sensor Origin approximation sensor Power voltage 24V±10% Control output NPN open collector output under 24V 8mA Output control Testing (sensing) : output transistor OFF (closed)	Motor Type/Shaft numbers 5-phase stepper / □42 double shafts Brand / Model Sanyo / 103F5510-8211 Driver brand/Model Please refer to motor / driver cross-reference table (page E3) Connector Stage side connector 15-pin male end connector D-SUB Controller side connector 15-pin female end connector D-SUB (optional) Sensor Origin sensor Photoelectric sensor EE-SX4134 Limit sensor Origin approximation sensor Power voltage 24V±10% Control output NPN open collector output under 24V 8mA Output control Testing (sensing) : output transistor OFF (closed)

* GMT standard wiring is defined as the product photo, and not optional available.
* GMT motorized stage is equipped with D-SUB connector as the standard one which is available to be changed to HRS or NJC on request as per reference stated on P.171
* In case HRS connection cable is required, please consult to your regional sales.

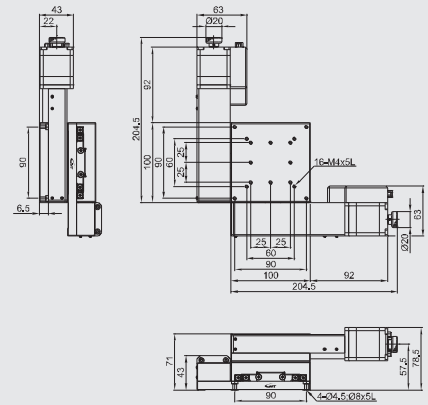
XY axis



AYW8030-F2PN-CD



AYW10040-F2PN-CD



AYW12050-F2PN-CD

