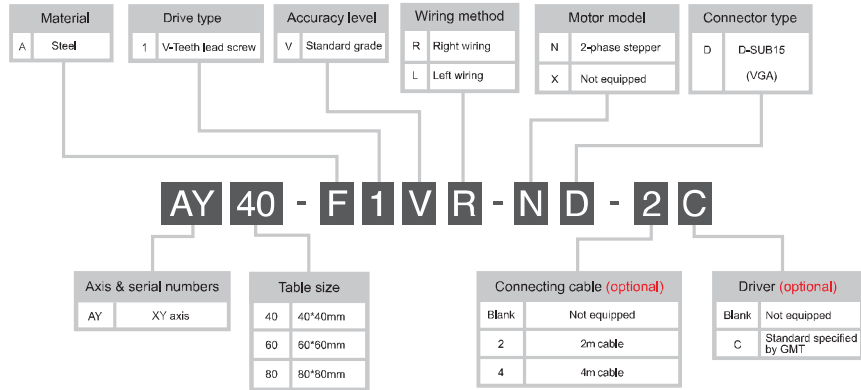


Model description

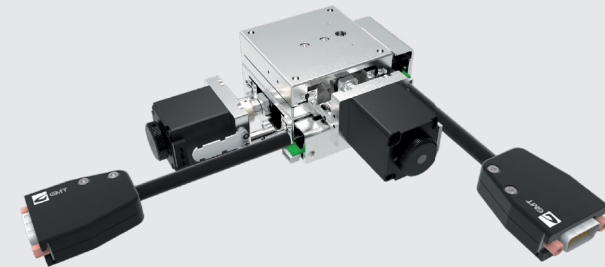
AY-F series



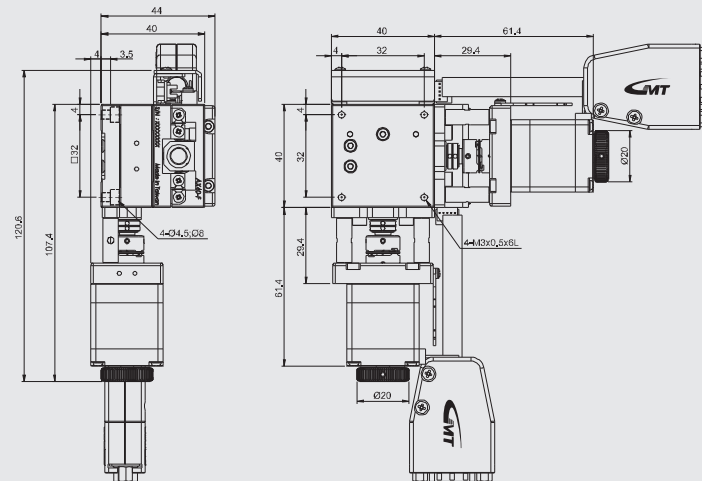
Model description		AY40-F1VR-ND	AY60-F1VR-ND	AY80-F1VR-ND	
		AY40-F1VL-ND	AY60-F1VL-ND	AY80-F1VL-ND	
Mechanical specifications	Table size	40X40 mm	60X60 mm	80X80 mm	
	Travel stroke		15 mm		
	Drive type	V-Teeth lead screw Ø6 lead 1mm			
	Rail	Linear ball guiding			
	Stage material/Surface treatment	Steel / Nickel plating			
	Main unit weight	0.8 Kg	1.4 Kg	2 Kg	
	Coupling	FAMC13-5*5			
Precision specifications	Accuracy level	V : Standard grade			
	Wiring method	R : Right wiring (Inventory specification) / L : Left wiring			
	Resolution (pulse)	Full / Half 5 µm / 2.5 µm			
	Maximum speed (full step)	6 mm / sec			
	Positioning precision	25 µm			
	Repeatability precision	±2 µm			
	Load capacity	9 Kgf	11 Kgf	13 Kgf	
Electrical specifications	Motor	Type/Shaft numbers Brand/ Model 2-phase stepper / □28 double shafts GMT / 2MS-N28D32A			
	Driver brand/Model	GMT / DS2-022A (Additional options)			
	Connector	Stage side connector 15-pin male end connector D-SUB			
	Controller side connector	15-pin female end connector D-SUB (optional)			
	Sensor	Origin sensor	Photoelectric sensor EE-SX4134		
		Limit sensor			
		Power voltage	24V±10%		
Control output		NPN open collector output under 24V 8mA			
Output control	Testing (sensing): output transistor OFF (closed)				

©GMT Standard Motorized Stage series is equipped with D-SUB connector as the standard one which is available to be changed to HRS or NJC on request as per reference stated on P.160.
 □In case HRS connection cable is required, please consult to your regional sales.

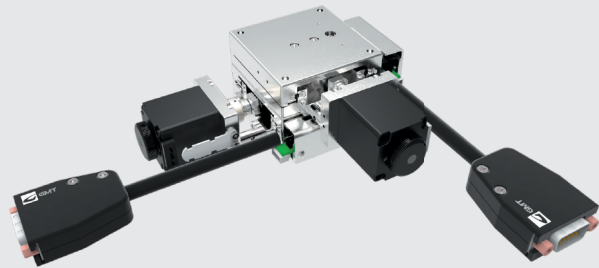
XY axis



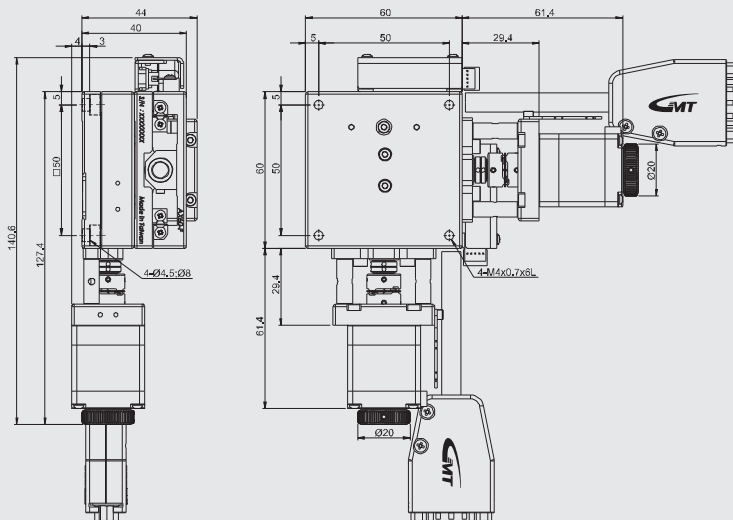
AY40-F1VR-ND



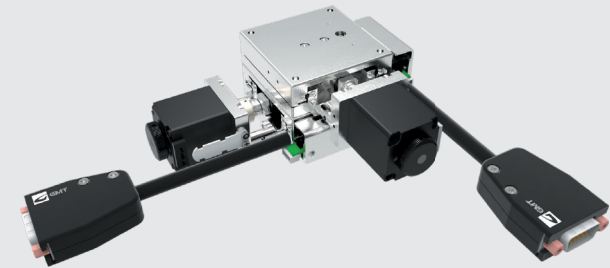
© Photo is AY60-F1VR-ND ◦



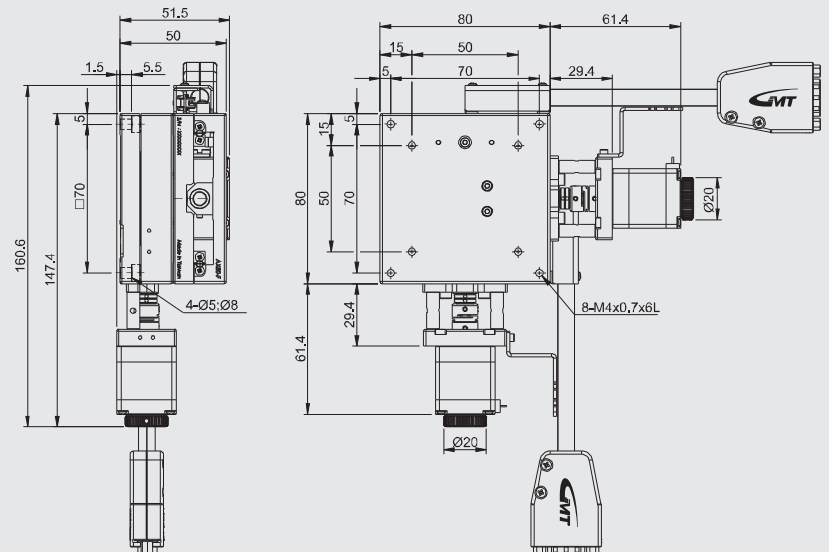
AY60-F1VR-ND



© Photo is AY60-F1VR-ND ◦



AY80-F1VR-ND



© Photo is AY60-F1VR-ND ◦