

Model description

AXW series

Material	Drive type	Accuracy level	Wiring method	Motor model	Connector type
F Carbon steel	2 Ball screw	P Precision grade	L Left wiring R Right wiring	C 5-phase stepper X Not equipped	D D-SUB15 (VGA)

AXW 80 30 - F 2 P L - C D - 2 C

Axis & serial numbers	Table size	Travel stroke	Connecting cable (optional)	Driver (optional)
AXW X axis	80 80*80mm 100 100*100mm 120 120*120mm	30 30mm 40 40mm 50 50mm	Blank Not equipped 2 2m cable 4 4m cable 6 6m cable	Blank Not equipped C Standard specified by GMT

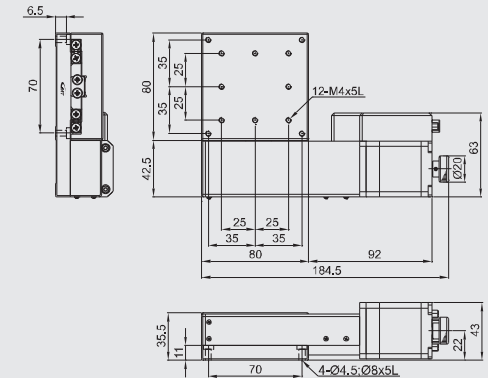
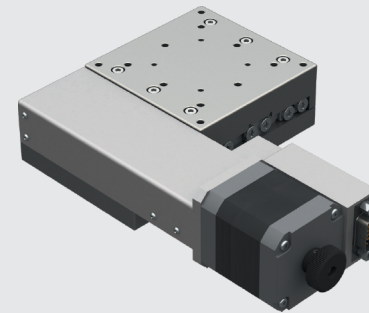
Model Number	AXW8030-F2PL-CD	AXW10040-F2PL-CD	AXW12050-F2PL-CD
Mechanical specifications	Table size 80X80 mm Travel stroke 30 mm Drive type Ball screw Ø8 lead 1mm Rail Crossed-roller guiding Stage material/Surface treatment Carbon steel / Electroless nickel plating Main unit weight 2.8 Kg Coupling FAMCS16-5*5 Accuracy level P : Precision grade Wiring method L : Left wiring	Table size 100X100 mm Travel stroke 40 mm Drive type Ball screw Ø8 lead 1mm Rail Crossed-roller guiding Stage material/Surface treatment Carbon steel / Electroless nickel plating Main unit weight 4.8 Kg Coupling FAMCS16-5*5 Accuracy level P : Precision grade Wiring method L : Left wiring	Table size 120X120 mm Travel stroke 50 mm Drive type Ball screw Ø8 lead 1mm Rail Crossed-roller guiding Stage material/Surface treatment Carbon steel / Electroless nickel plating Main unit weight 8.4 Kg Coupling FAMCS16-5*5 Accuracy level P : Precision grade Wiring method L : Left wiring
Precision specifications	Resolution (pulse) Full / Half Maximum speed (full step) 10 mm / sec Positioning precision 5 µm Repeatability precision ±0.5 µm Load capacity 50 Kgf Missed step 1 µm Parallelism 20 µm Dynamic straightness 2 µm Dynamic parallelism 10 µm	Resolution (pulse) Full / Half Maximum speed (full step) 10 mm / sec Positioning precision 5 µm Repeatability precision ±0.5 µm Load capacity 60 Kgf Missed step 1 µm Parallelism 20 µm Dynamic straightness 2 µm Dynamic parallelism 10 µm	Resolution (pulse) Full / Half Maximum speed (full step) 10 mm / sec Positioning precision 10 µm Repeatability precision ±0.5 µm Load capacity 70 Kgf Missed step 1 µm Parallelism 20 µm Dynamic straightness 2 µm Dynamic parallelism 10 µm
Electrical specifications	Motor Type/Shaft numbers 5-phase stepper / □42 double shafts Brand/Model Sanyo / 103F5510-8211 Driver brand/Model Please refer to motor / driver cross-reference table (page E3) Connector Stage side connector 15-pin male end connector D-SUB Controller side connector 15-pin female end connector D-SUB (optional) Sensor Origin sensor Photoelectric sensor EE-SX4134 Limit sensor Origin approximation sensor Power voltage 24V±10% Control output NPN open collector output under 24V 8mA Output control Testing (sensing) : output transistor OFF (closed)	Motor Type/Shaft numbers 5-phase stepper / □42 double shafts Brand/Model Sanyo / 103F5510-8211 Driver brand/Model Please refer to motor / driver cross-reference table (page E3) Connector Stage side connector 15-pin male end connector D-SUB Controller side connector 15-pin female end connector D-SUB (optional) Sensor Origin sensor Photoelectric sensor EE-SX4134 Limit sensor Origin approximation sensor Power voltage 24V±10% Control output NPN open collector output under 24V 8mA Output control Testing (sensing) : output transistor OFF (closed)	Motor Type/Shaft numbers 5-phase stepper / □42 double shafts Brand/Model Sanyo / 103F5510-8211 Driver brand/Model Please refer to motor / driver cross-reference table (page E3) Connector Stage side connector 15-pin male end connector D-SUB Controller side connector 15-pin female end connector D-SUB (optional) Sensor Origin sensor Photoelectric sensor EE-SX4134 Limit sensor Origin approximation sensor Power voltage 24V±10% Control output NPN open collector output under 24V 8mA Output control Testing (sensing) : output transistor OFF (closed)

* GMT motorized stage is equipped with D-SUB connector as the standard one which is available to be changed to HRS or NJC on request as per reference stated on P.171
* In case HRS connection cable is required, please consult to your regional sales.

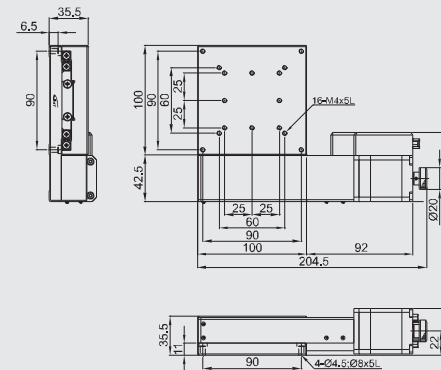
X axis



AXW8030-F2PL-CD



AXW10040-F2PL-CD



AXW12050-F2PL-CD

