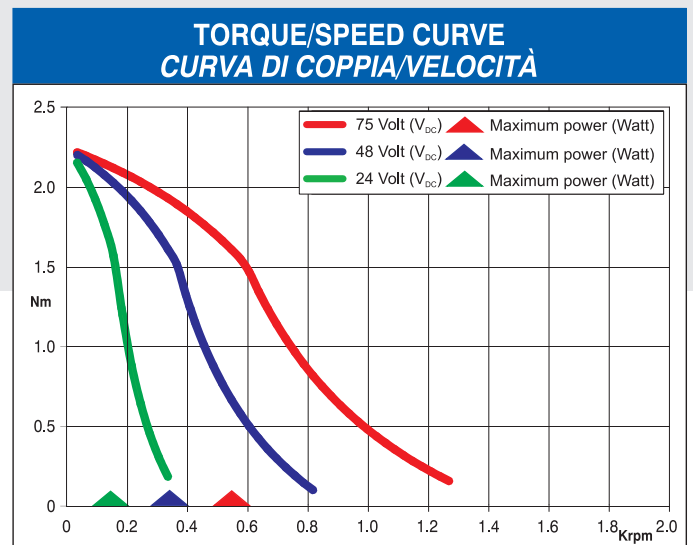


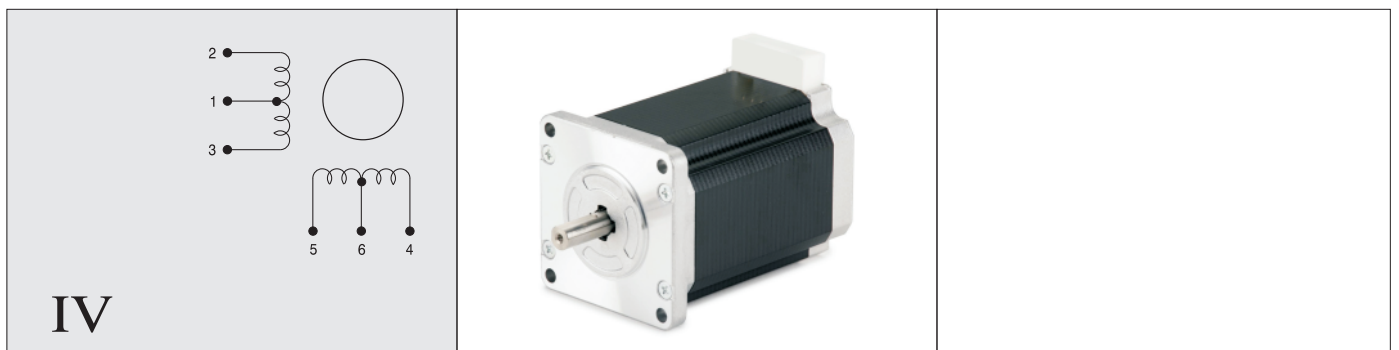
MOTOR CONNECTOR IS JST mod. B4P-VH 6 POLES MALE.
FOR CONNECTION USE JST mod. VHR-6N FEMALE CONNECTOR AND mod. SVH-21T-P1.1 CONTACTS.
NOTE: 103-H7823-0740 MOTORS NEED CVM77100 AND CVM77300 R.T.A. CABLES. CONTACT R.T.A. FOR FURTHER DETAILS.

Dimensions in mm.

FEATURES CARATTERISTICHE		
MODEL MODELLO		103 - H7823 - 0740
BASIC STEP ANGLE		1.8 ± 0.09°
BIPOLAR CURRENT	(Amp)	2.2 ^(*)
UNIPOLAR CURRENT	(Amp)	3
RESISTANCE	(Ohm)	1.25
INDUCTANCE	(mH)	2.4
BIPOLAR HOLDING TORQUE	(Ncm)	300
UNIPOLAR HOLDING TORQUE	(Ncm)	240
ROTOR INERTIA	(Kg ^m 2 x 10 ⁻⁷)	840
THEORETICAL ACCELERATION	(rad x sec. ⁻²)	35700
BACK E.M.F.	(V/Krpm)	55
MASS	(Kg)	1.4
LEADS CODE		IV



(*) Bipolar series connection.
(*) Collegamento bipolare serie.



IV

Suggested R.T.A. driver: ADW Series.