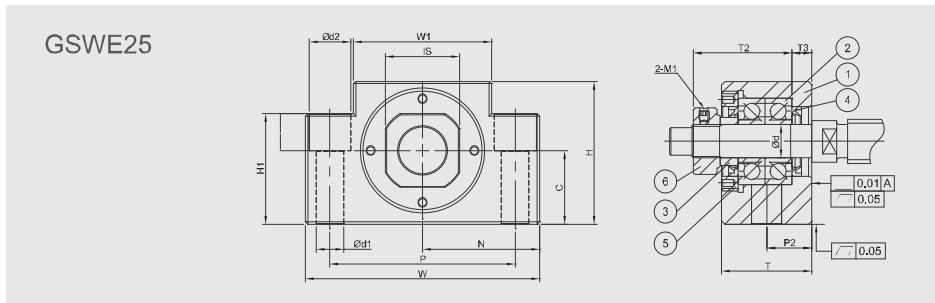
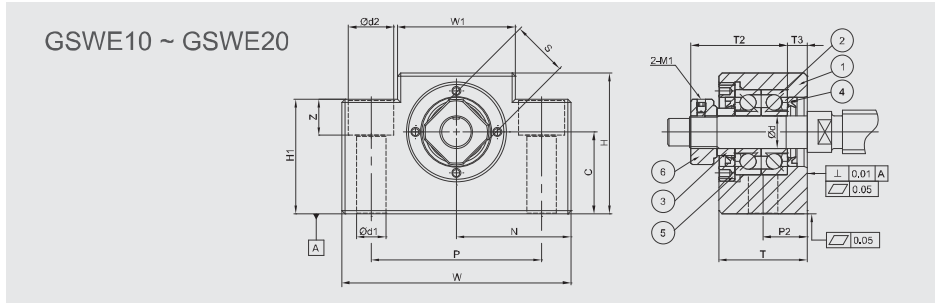


Model No.	Parts no. ①③④⑥	
	Material	Surface Finish
GSWE □□ - S□B	S50C	Black Dyed
GSWE □□ - S□N		Ni-Plating



Specification

Standard Type			Dimensions														
Light pre-loaded	Medium pre-loaded	Hard pre-loaded	Ød	T	T1	T2	T3	W _{0.04}	W1	H	H1	N _{±0.02}	C _{0.04}	P	P2	P3	Ød1
GSWE10-SL□	GSWE10-SM□	GSWE10-SH□	10	27	8.5	29.5	6	70	36	43	35	35	25 ⁰ _{0.04}	52	-	-	9
GSWE12-SL□	GSWE12-SM□	GSWE12-SH□	12	27	8.5	29.5	6	70	36	43	35	35	25 ⁰ _{0.04}	52	-	-	9
GSWE15-SL□	GSWE15-SM□	GSWE15-SH□	15	29	14	38	5	80	41	50	40	40	30 ⁰ _{0.04}	60	-	-	11
GSWE20-SL□	GSWE20-SM□	GSWE20-SH□	20	48	14	52	10	95	56	58	45	47.5	30 ⁰ _{0.04}	75	22	13	11
GSWE25-SL□	GSWE25-SM□	GSWE25-SH□	25	58	15	59	14	105	66	68	25	52.5	35 ⁰ _{0.04}	85	30	14	11

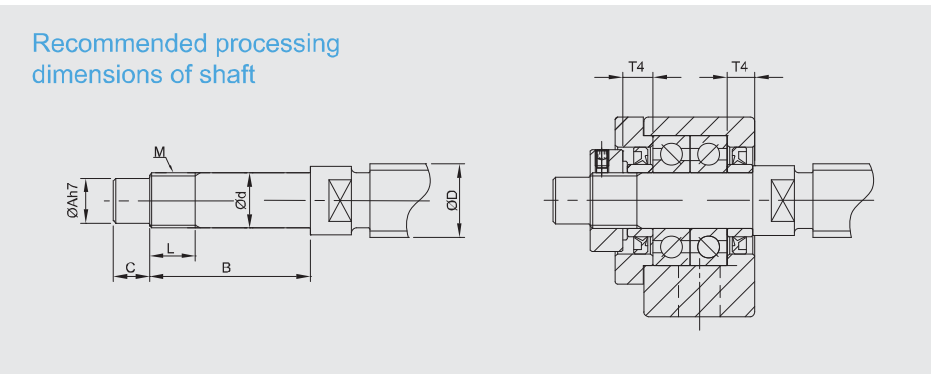
Ordering Example	GSWE	10	SL	N	J
	Model No.	Shaft Dia.	Grade/Pre-loaded	Surface finish	Bearing category



Components

No.	Parts	Material	Q'ty
①	Main housing	S50C	1
②	Bearing	SUJ2	1 pair
③	Cover	S50C	1
④	Space ring	S50C	2
⑤	Seal (<Ø8 one seal only)	NBR	2
⑥	Lucknut	S50C	1

- ①②③ are in one unit. No disassemble for accuracy concern.
- Bearing filled with proper lithium soap lubricant and sealed.



Unit : mm

Standard Type			Recommended processing dimensions of shaft							
			Ball Screw Shaft O. D.	Shaft End Diameter	Processing sizes of shaft			Nominal thread	Space ring length	
Ød2	Z	□S	ØD	Ød	ØA	B	C	M	L	T4
14	11	16	12 / 14 / 15	10 ³ _{0.01}	8	36	15	M10*P1.0	11	5.5
14	11	19	14 / 15 / 16	12 ³ _{0.01}	10	36	15	M12*P1.0	11	5.5
17	15	22	18 / 20	15 ³ _{0.01}	12	47	20	M15*P1.0	13	6
17	15	30	25 / 28 / 30	20 ³ _{0.01}	17	62	25	M20*P1.0	17	11
-	-	35	30 / 32 / 36	25 ³ _{0.01}	20	75	30	M25*P1.5	20	15

* Supported Side spec refer to P.50~P.51