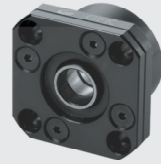
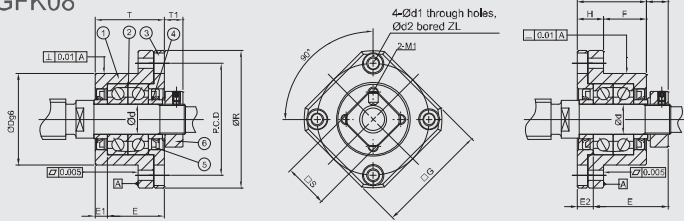


Model No.	Parts no. ①③④⑥	
	Material	Surface Finish
GFK □□ - S □B	S50C	Black Dyed
GFK □□ - S □N		Ni-Plating

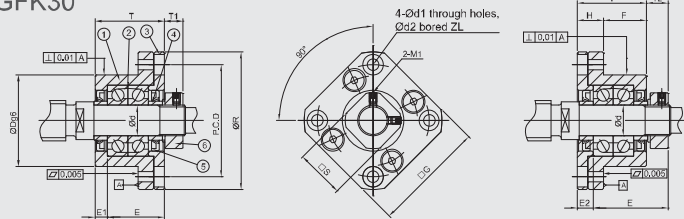
GFK-B



GFK06 ~ GFK08



GFK10 ~ GFK30



Specification

Standard Type			Dimensions												
Light pre-loaded	Medium pre-loaded	Hard pre-loaded	Ød	ØR	□G	T	H	F	ØDg6	E	Installation (A)		Installation (B)		PCD
											T1	E1	T2	E2	
GFK06-SL □	GFK06-SM □	GFK06-SH □	6	36	28	20	7	13	22 ^{+0.007} _{-0.005}	22	5.5	3.5	6.5	4.5	28
GFK08-SL □	GFK08-SM □	GFK08-SH □	8	43	35	23	9	14	28 ^{+0.007} _{-0.005}	26	7	4	8	5	35
GFK10-SL □	GFK10-SM □	GFK10-SH □	10	52	42	27	10	17	34 ^{+0.007} _{-0.005}	29.5	7.3	5	8.5	6	42
GFK12-SL □	GFK12-SM □	GFK12-SH □	12	54	44	27	10	17	36 ^{+0.007} _{-0.005}	29.5	7.3	5	8.5	6	44
GFK15-SL □	GFK15-SM □	GFK15-SH □	15	63	52	32	15	17	40 ^{+0.007} _{-0.005}	36	9.8	6	12	8	50
GFK17-SL □	GFK17-SM □	GFK17-SH □	17	77	61	45	22	23	50 ^{+0.007} _{-0.005}	47	11	9	14	12	62
GFK20-SL □	GFK20-SM □	GFK20-SH □	20	85	68	52	22	30	57 ^{+0.007} _{-0.005}	50	7.8	10	12	14	70
GFK25-SL □	GFK25-SM □	GFK25-SH □	25	98	79	57	27	30	63 ^{+0.007} _{-0.005}	60	12.8	10	20	17	80
GFK30-SL □	GFK30-SM □	GFK30-SH □	30	117	93	62	30	32	75 ^{+0.007} _{-0.005}	61	10.8	12	17	18	95

Ordering Example	GFK	10	SL	N	J
	Model No.	Shaft Dia.	Grade/Pre-loaded	Surface finish	Bearing category

GFK-N

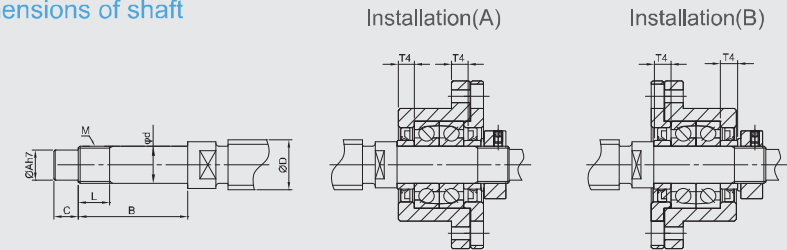


Components

No.	Parts	Material	Q'ty
①	Main housing	S50C	1
②	Bearing	SUJ2	1 pair
③	Cover	S50C	1
④	Space ring	S50C	2
⑤	Seal (<Ø8 one seal only)	NBR	2
⑥	Lucknut	S50C	1

- ①②③ are in one unit. No disassemble for accuracy concern.
- Bearing filled with proper lithium soap lubricant and sealed.

Recommended processing dimensions of shaft



Unit : mm

						Recommended processing dimensions of shaft						
						Ball Screw Shaft O. D.		Shaft End Diameter	Processing sizes of shaft			Nominal thread
Ød1	Ød2	Z	M1	□S	ØD	Ød	ØA	B	C	M	L	T4
3.4	6	3.3	M3	12	8	6 ^{+0.005} _{-0.002}	4	28	8	M6*P0.75	8	5
3.4	6	3.3	M3	14	10 / 12	8 ^{+0.005} _{-0.002}	6	32	9	M8*P1.0	10	5.5
4.5	8	4	M3	16	12 / 14 / 15	10 ^{+0.005} _{-0.002}	8	36	15	M10*P1.0	11	5.5
4.5	8	4	M3	19	14 / 15 / 16	12 ^{+0.005} _{-0.002}	10	36	15	M12*P1.0	11	5.5
5.5	9.5	6	M3	22	18 / 20	15 ^{+0.005} _{-0.002}	12	47	20	M15*P1.0	13	10
6.6	11	10	M4	24	20 / 25	17 ^{+0.005} _{-0.002}	15	53	23	M17*P1.0	17	7
6.5	11	10	M4	30	25 / 28 / 30	20 ^{+0.005} _{-0.002}	17	62	25	M20*P1.0	17	11
9	15	13	M5	35	30 / 32 / 36	25 ^{+0.005} _{-0.002}	20	76	30	M25*P1.5	20	15
11	17.5	15	M6	40	36 / 40	30 ^{+0.005} _{-0.002}	25	72	38	M30*P1.5	25	9

• Supported Side spec refer to P.36~P.37