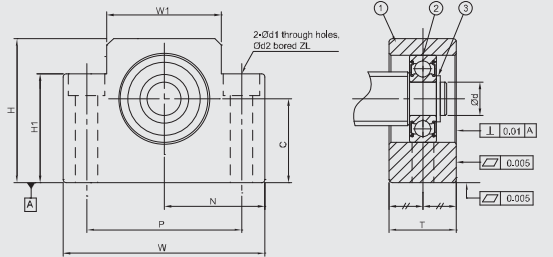
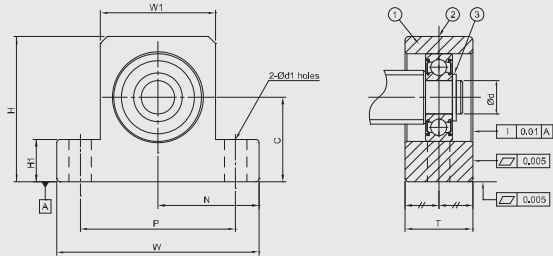


Model No.	Parts no. ①	
	Material	Surface Finish
GAF □□ - SB	S50C	Black Dyed
GAF □□ - SN		Ni-Plating

GAF06 ~ GAF20



GAF25



Specification

Standard Type	Dimensions									
	Ød	T	W <sub>±0.04</sub>	W1	H	H1	P	Ød1	Ød2	Z
GAF06-S □	6	12	42	18	25	20	30	5.2	9.5	7
GAF08-S □	6	15	52	25	32	26	38	6.3	11	12
GAF10-S □	8	20	70	36	43	35	52	8.7	14	11
GAF12-S □	10	20	70	36	43	35	52	8.7	14	11
GAF15-S □	15	20	80	41	50	40	60	8.7	14	11
GAF20-S □	20	26	95	56	58	45	75	10.7	17	15
GAF25-S □	25	30	105	66	68	25	85	11	-	-

Ordering Example	GAF	10	S	N	J
	Model No.	Shaft Dia.	Grade	Surface finish	Bearing category

GAF-B



GAF-N

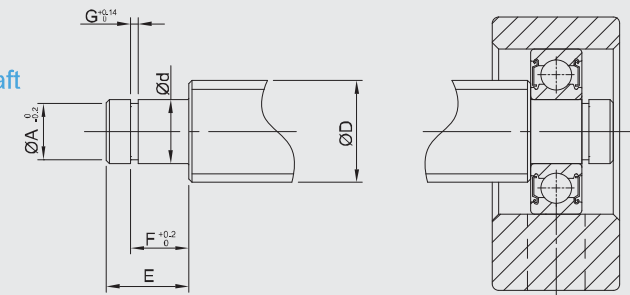


Components

No.	Parts	Material	Q'ty
①	Main housing	S50C	1
②	Bearing	SUJ2	1
③	Snap ring	SWB	1

- Bearing filled with proper lithium soap lubricant maintenance free.
- Bearing with two steel covers in black dyed.
- Bearing with two touch-type plastic covers in Ni-plating.

Recommended processing dimensions of shaft



Unit : mm

N <sub>±0.02</sub>	C <sub>±0.04</sub>	Recommended processing dimensions of shaft						Snap ring
		Ball Screw Shaft O. D.	Shaft End Diameter	Groove sizes machined for snap ring				
ØD	Ød	ØA	E	F	G			
21	13	8	6 <sup>-0.008</sup> <sub>-0.012</sub>	6	9	6.7	0.8	S 06
26	17	8 / 10	6 <sup>-0.005</sup> <sub>-0.012</sub>	6	9	6.7	0.8	S 06
35	25	12 / 14 / 15	8 <sup>-0.005</sup> <sub>-0.012</sub>	7.6	10	7.9	0.9	S 08
35	25	14 / 15 / 16	10 <sup>-0.005</sup> <sub>-0.012</sub>	9.6	11	9.15	1.15	S 10
40	30	18 / 20	15 <sup>-0.005</sup> <sub>-0.011</sub>	14.3	13	10.15	1.15	S 15
47.5	30	25 / 28 / 30	20 <sup>-0.005</sup> <sub>-0.014</sub>	19	19	15.35	1.35	S 20
52.5	35	28 / 30 / 32	25 <sup>-0.005</sup> <sub>-0.014</sub>	25	21	16.35	1.35	S 25

• Fixed Side spec please refer to P.14~15 and P.22~23