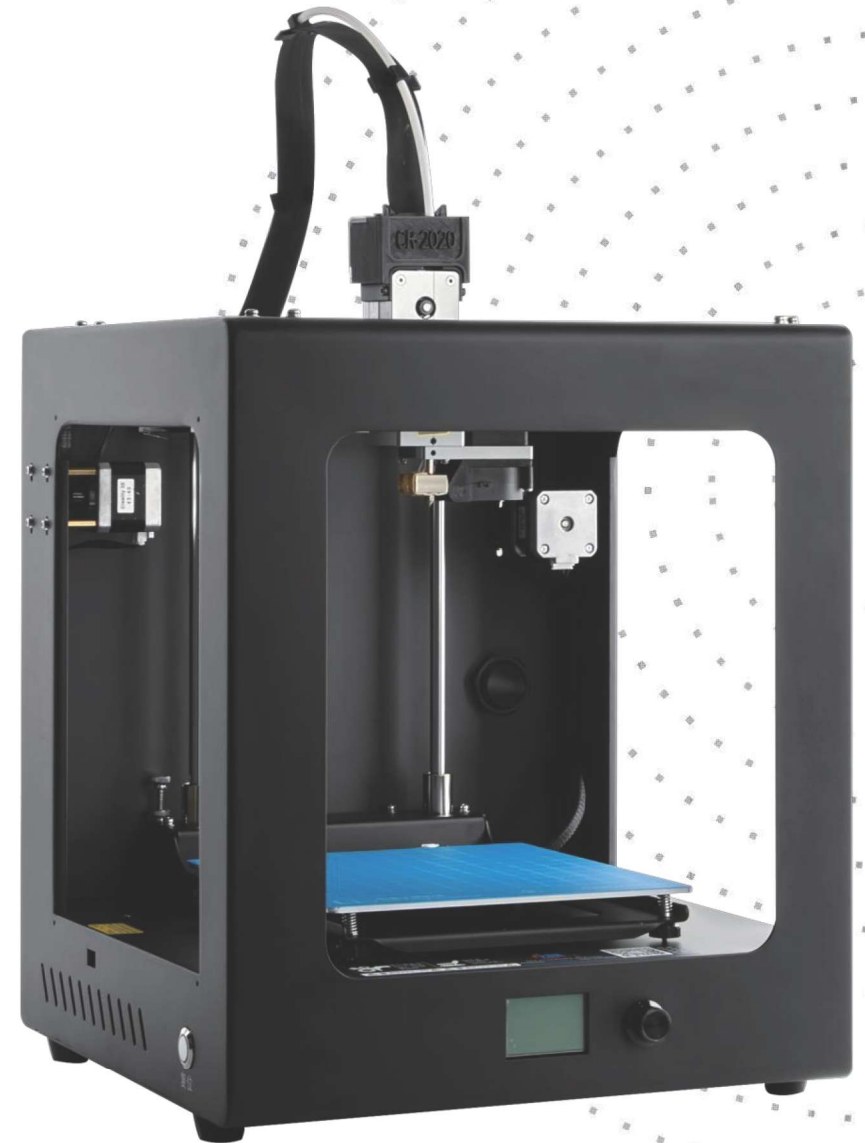


CREALITY

CR-2020 3D Printer User Manual



- ◆ This user manual is for the CR-2020 3D printer.
- ◆ Because of software/hardware upgrades and model differences, new revisions may not be listed in this manual
- ◆ Detailed instructions for use are available in the storage card

V.3.2

Notes

1. Do not use the printer any way other than described herein in order to avoid personal injury or property damage.
2. Do not place the printer near any heat source or flammable or explosive objects. We suggest placing it in a well-ventilated, low-dust environment.
3. Do not expose the printer to violent vibration or any unstable environment, as this may cause poor print quality.
4. Before using experimental or exotic filaments, we suggest using standard filaments such as PLA to calibrate and test the machine.
5. Do not use any other power cable except the one supplied. Always use a grounded three-prong power outlet.
6. Do not touch the nozzle or printing surface during operation as they may be hot. Keep hands away from machine while in use to avoid burns or personal injury.
7. Do not wear gloves or loose clothing when operating the printer. Such cloths may become tangled in the printers moving parts leading to burns, possible bodily injury, or printer damage.
8. When cleaning debris from the printer hotend, always use the provided tools. Do not touch the nozzle directly when heated. This can cause personal injury.
9. Clean the printer frequently. Always turn the power off when cleaning, and wipe with a dry cloth to remove dust, adhered printing plastics or any other material off the frame, guide rails, or wheels . Use glass cleaner or isopropyl alcohol to clean the print surface before every print for consistent results.
10. Children under 10 years of age should not use the printer without supervision.

CONTENTS

Dear consumers:

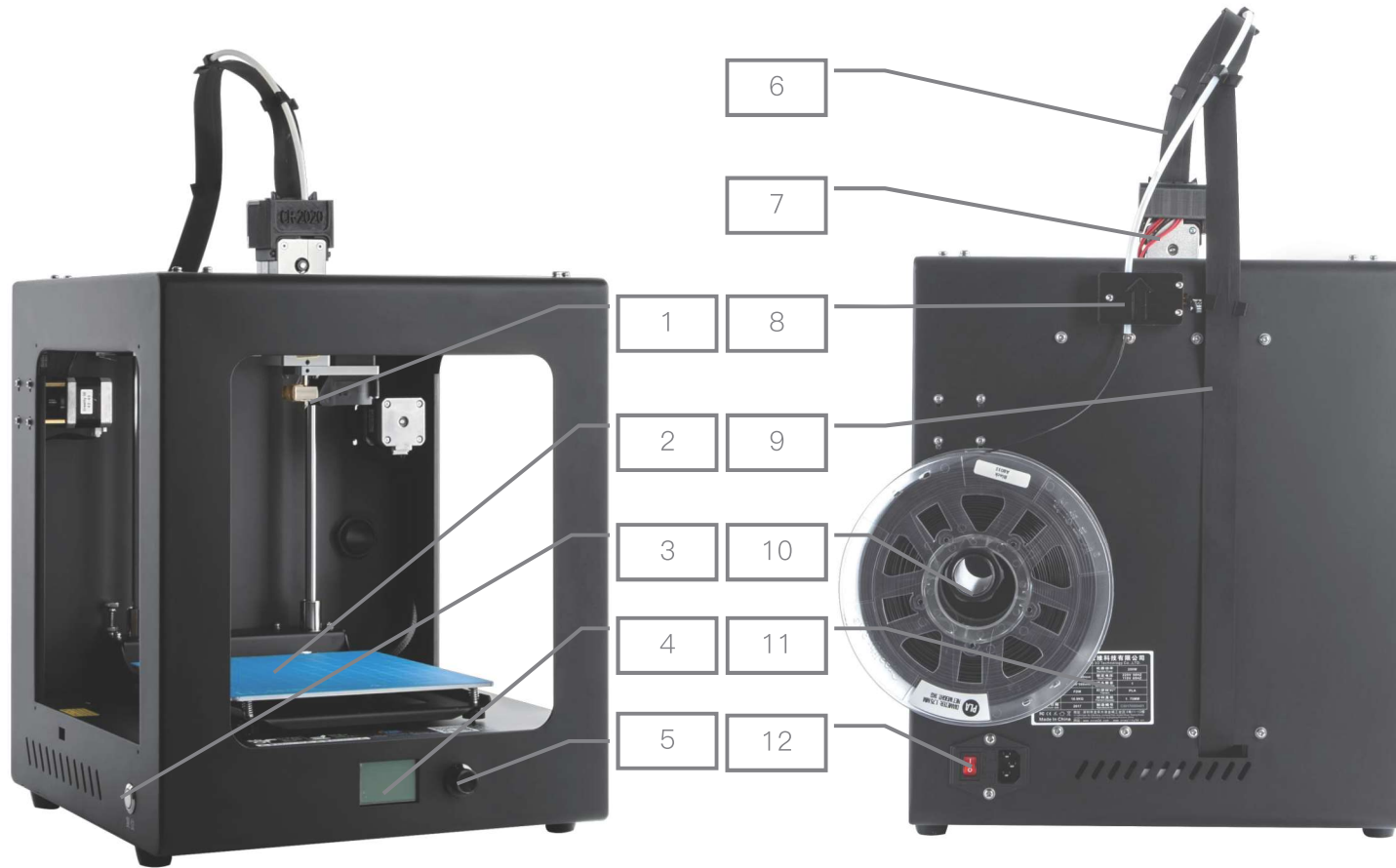
Thank you for choosing our products. For the best experience, please read the instructions before operating the Printer. Our 3D team will always be ready to give you the best service. Please contact us via the phone number or e-mail address provided at the end when you encounter any problem with the Printer.

For a better experience in using our product, you may learn how to use the Printer in the following ways:

1. View the accompanied instructions and videos in the storage card.
2. Visit our official website www.crealty.com You will find relevant software/hardware information, contact details and operation and maintenance instructions on the website.

Introduction.....	1
General List.....	2
Device Installation.....	3
Screen Information.....	4
Platform Levelling.....	5
Loading Filament.....	6
Software Installation.....	7
First Printing.....	8
Corrective Maintenance.....	9

A、 Introduction



- 1. Nozzle Kit
- 2. Print Platform
- 3. Reset Switch
- 4. LCD Screen

- 5. Knob
- 6. PTFE Tube
- 7. Extruder
- 8. Filament Detector

- 9. Ribbon Cable
- 10. Filament Holder
- 11. Nameplate
- 12. Power Switch

Basic Parameters	
Mode Name	CR-2020
Molding Size	200*200*200mm
Molding Technology	FDM
Number of Nozzles	1
Print Layer Thickness	0.1mm-0.4mm
Nozzle Diameter	0.4mm
Print Precision	±0.1mm
Filament	1.75mm PLA
File Format	STL/OBJ/AMF
Printing Method	Online or storage Card Offline
Slicing Software	Creality Slicer/Repetier-Host/Simplify3D
Rated Voltage	115V/230V 50/60Hz
Output Voltage	24V
Rated Power	200W
Platform Temp.	≤100°C
Nozzles Temp.	≤250°C
Resume Print	Yes
Filament Detector	Yes
Multi-Language	Support
Operation System	Windows XP/Vista//7/8/10 MAC/Linux
Printing Speed	≤150mm/s, Normal 30-60mm/s

B、 General List



Tool Package













Filament








3D Printer

Tool List

No.	Image	Name	Qty
1		Filament Holder Tube	1
2		Power Cable	1
3		USB Cable	1
4		PTFE Tube	1
5		Socket Wrench	1

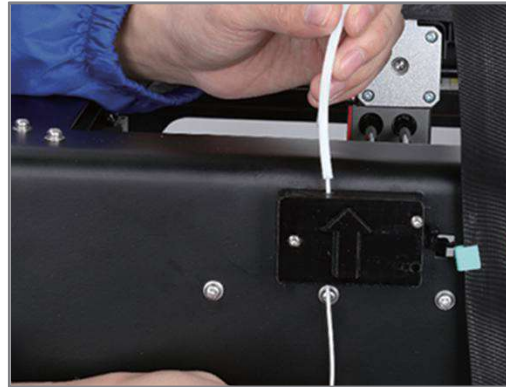
No.	Image	Name	Qty
6		Wrench & Screw Driver	1Set
7		Storage Card & Reader	1Set
8		Spade	1
9		Pliers	1
10		Nozzle Cleaner	1

No.	Image	Name	Qty
11		Utility knife	1
12		Tweezers	1
13		Grease	1
14		Solid Glue	1
15		Spare Parts	1Set

C、 Device Installtion



1、 Install Ribbon Cable



2、 Passing the filament through filament detector device



3、 Install the filament holder



4、 Insert the power cable

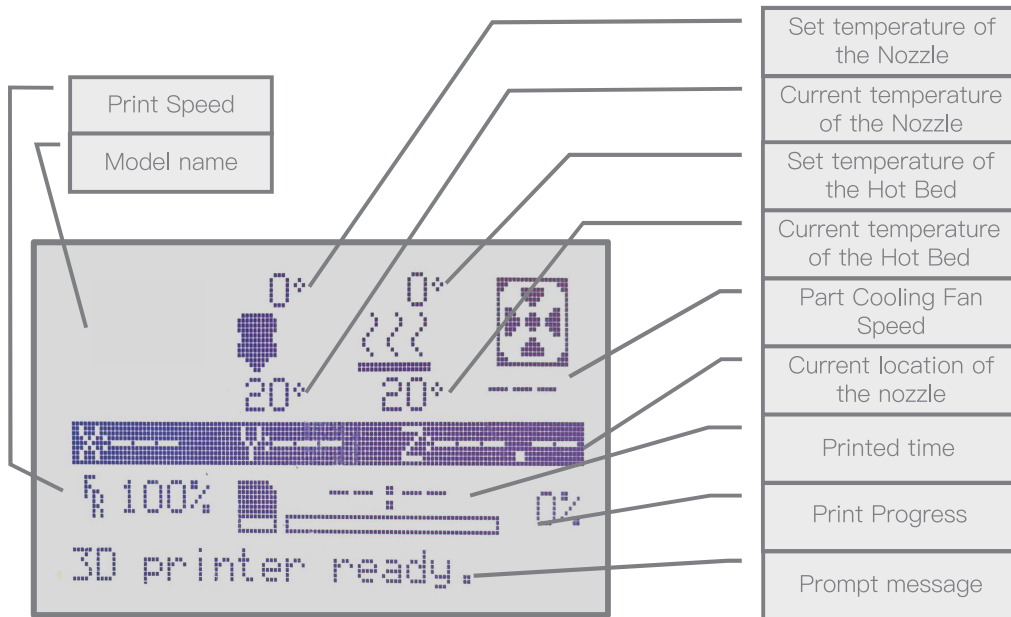
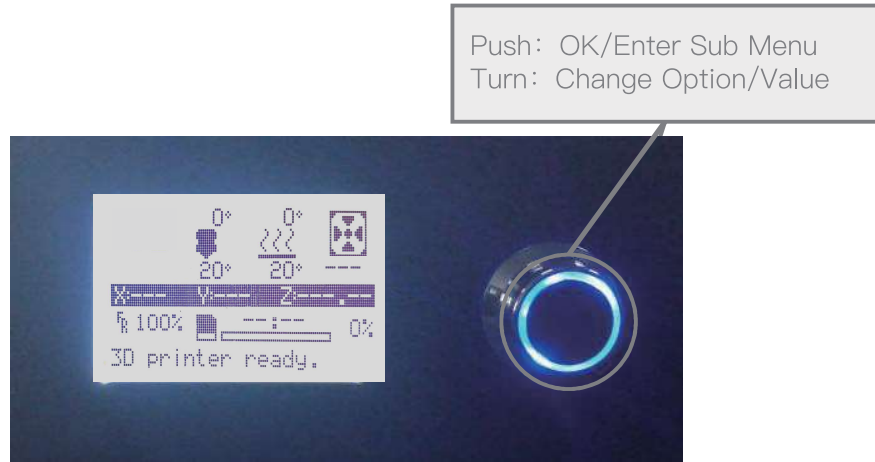


5、 Turn on the power switch



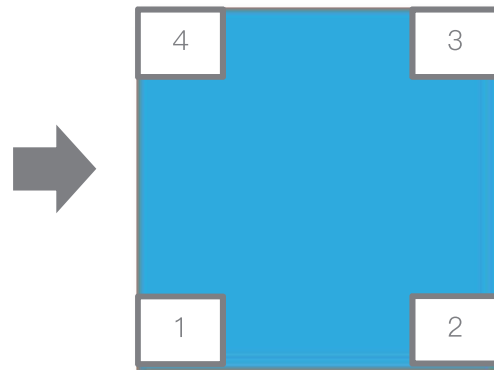
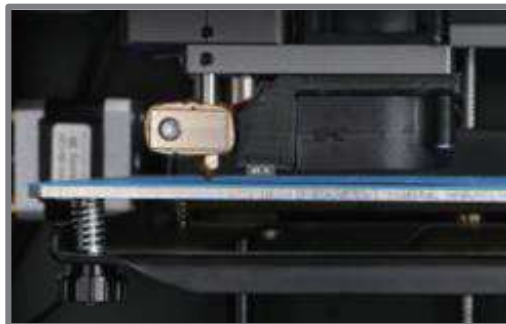
6、 Press the reset switch

D、Screen Information



Screen Information		
Menu	Sub Menu	Explanation
Not Printed		
Info Screen ↑	Main ↑	Return
Prepare →	Auto Home	Return to Zero
	Move Axis →	Moving X Y Z axis or Extruder by inputting
	Leveling	Nozzle moves to the corresponding position
	Disable Steppers	Close motor and move X Y Z axis by hands
	Preheat PLA	
	Preheat ABS	
	Cooldown	Close and cooldown the nozzle
Control →	Temperature →	Heat the nozzle and bed or change fan speed by inputting number
	Restore Failsafe	Restore factory setting
No card Print	Select the printing model	
Printing		
Tune →	Speed	Change Printing Speed by inputting
	Nozzle	Change the temperature by inputting
	Bed	Change the temperature by inputting
	Fan Speed	Change Fan Speed by inputting
	Flow	Change filament flow by inputting number
Pause Print	Can choose to continue printing	
Stop Print	Reprint or choose another model to print	

E、Platform Levelling



1. Choose Prepare → Leveling. Wait for the nozzle to move to 1 position
2. Adjust the leveling nut at the bottom of the platform so that the distance between the nozzle and the platform is 0.02mm. Use a piece of A4 paper (standard printer paper) to assist with the adjustment, making sure that the nozzle lightly presses on the paper
3. Select the next step until the leveling of all four corners is completed
4. Repeat 1–2 times if necessary to achieve better print results.

		<p>The nozzle is far from the platform so that the filament can't adhere to the platform.</p>
		<p>The filament are evenly extruded and just attached to the platform.</p>
		<p>The nozzle is too close to the platform, the filament is insufficiently extruded, and even the platform is scratched.</p>

F、Loading Filament



1、Prepare→Change filament→Load



2、After the temperature is heated to the preset temperature, the filament are fed into the extruder until the nozzle has overflowing the filament

Tips

If need to upload the filament, please select “Prepare” → “Change filament” → “Upload”. After confirm, the Printer will automatically return the filament when the temperature reaches the preset temperature, and the filament should be quickly pulled out when the printer is returned.

G、 Software Installation



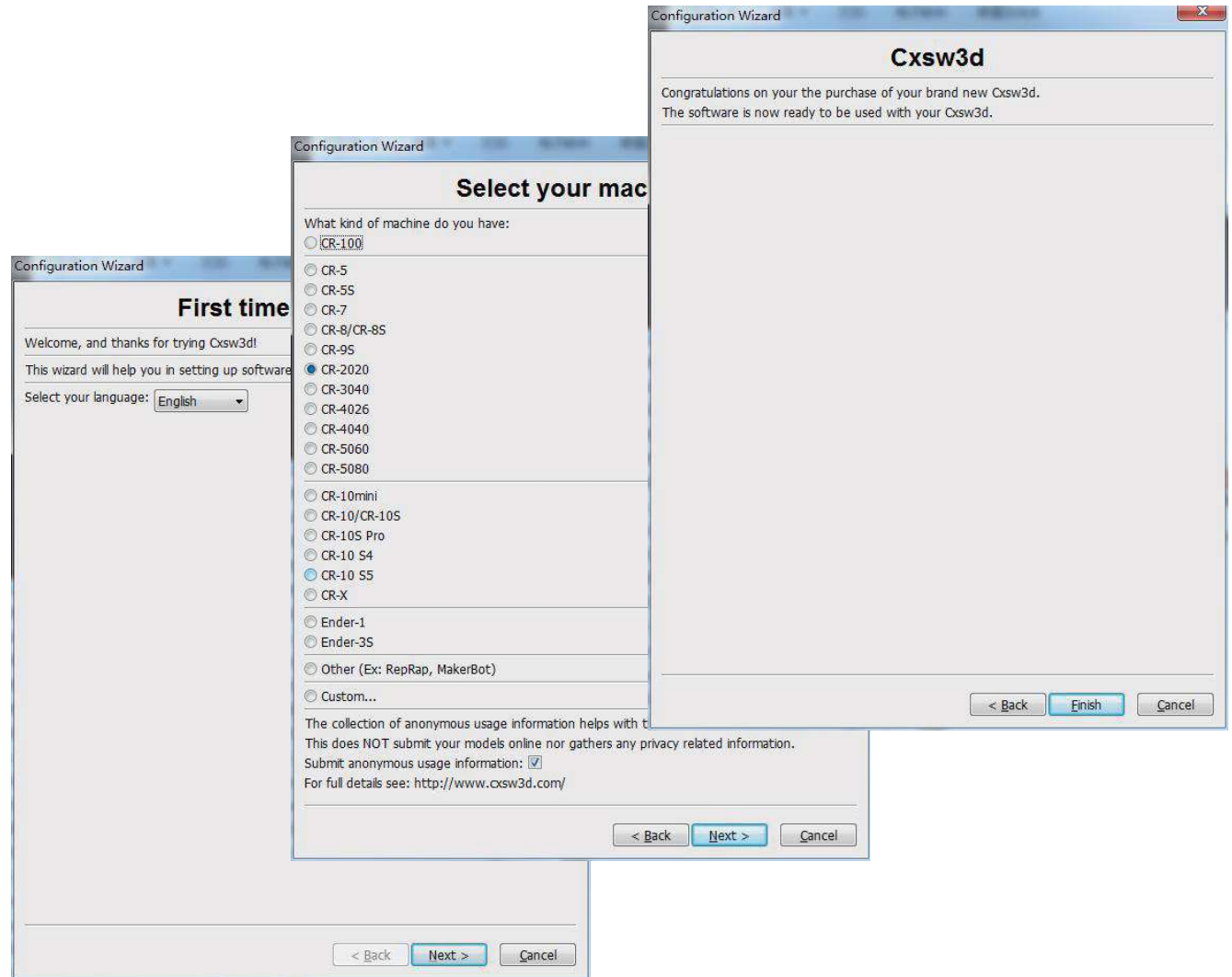
Creality
Slicer_1.2.3

1. Double click to install the software.



Creality Slicer

2、 Double click to open the software.

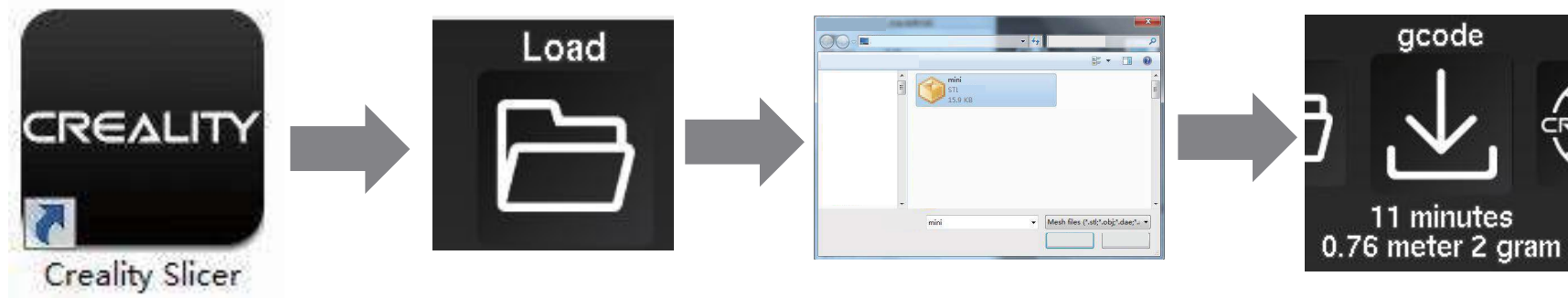


3. Select language→Next→Select your machine→Next→Finish.

H、 First Printing

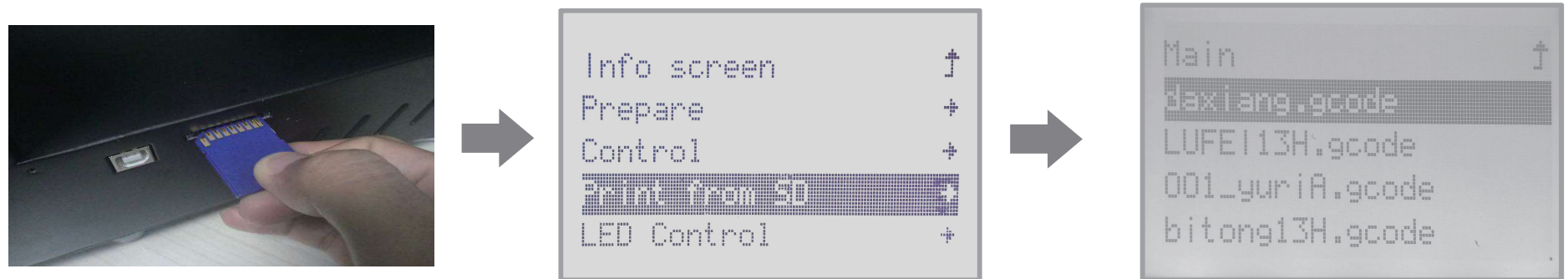
1.Slicing

Insert storage card into computer with Reader.



Open the software→Load→Select the file→Wait for slicing to finish ,and save the gcode file to storage card.

2、 Printing

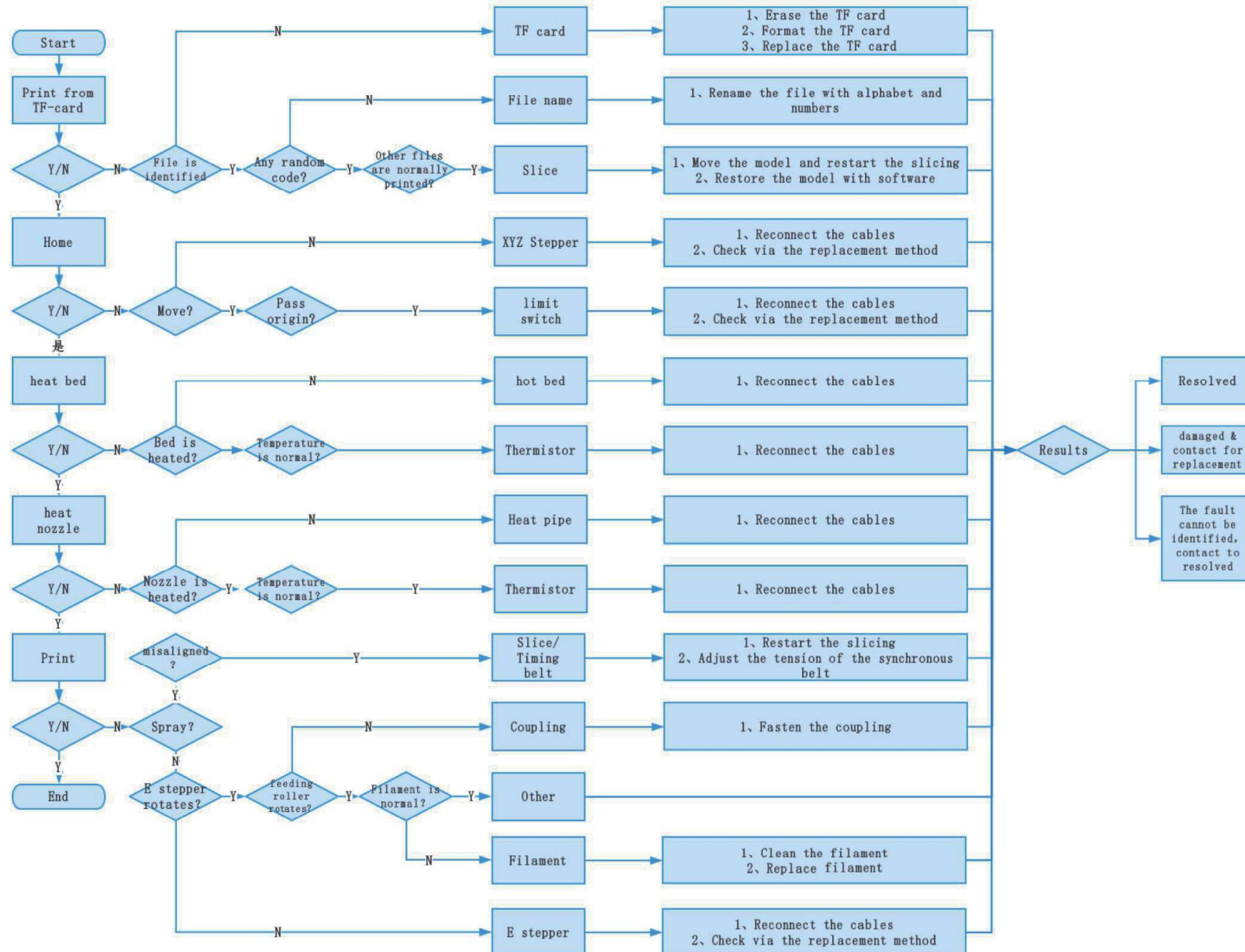


Insert storage card→press the knob→Choose storage card→Choose the files that you want to print

*The platform needs to level before printing, and special glue can be applied to the platform to increase the adhesion of the model.

*When naming a file, it cannot be a special symbol. It must be a Latin alphabet and a number.

I、Corrective Maintenance



After– Sales Service

Service

1. The printer can be returned within seven days, 15 days replacement, one year warranty, lifetime maintenance.

Replacement requirement

1. The appearance of the product is intact, without damage, scratches, smudges, cracks, deformation, etc.;
2. Machine parts, tools and others are complete;
3. Provide a complete and valid purchase invoice and warranty, product number should be the same.

Warranty coverage

1. The following accessories are not included in the warranty coverage if they are not damaged by transportation: platform sticker; platform forming plate; acrylic cover; card reader and storage card; platform glass; USB cable; filament; rack and tools,etc.
2. Profile: Before we deliver the goods, we will test machine, so maybe there will be light scratch, or due to long–distance transportation, which scratch the profile a little bit. in the premise of not affecting the normal use, in principle, not within the scope of warranty;
3. Nozzle assembly (nozzle, heating block, throat pipe,heat sink, PTFE tube, etc.) warranty period is 3 months, if they are damaged after the warranty expires, you need to purchase another one;
4. Motherboard, LCD display, power supply, hot bed,warranty period is 12 months, if there are quality problems, you can get free maintenance; over the warranty period, can be sent back to the original factory maintenance, the users need to bear the return shipping fee and maintenance costs;
5. Not included in warranty coverage:
 - (1) It is not possible to provide an effective after–sales service card or serial number;
 - (2) The whole machine and components exceed the warranty period;

(3) Equipment failure or damage caused by unauthorized modification of the equipment (private modification includes: 1. modification of the nozzle assembly; 2. modification of the machine structure; 3. use of third–party components; 4. use of third–party firmware procedures or change the original Factory firmware program, etc.);

(4) Equipment failure or damage due to incorrect installation and use;

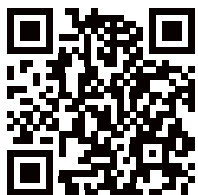
(5) Equipment failure or damage caused by the use of the equipment in a working environment not specified by the product;

(6) Equipment failure or damage due improper use (beyond workload, etc.) or maintenance (moisture, etc.);

(7) Equipment failure or damage due to the use of other branded components or low quality consumables.

Statement:

For better highlighting the function and effectiveness of 3d printer and promoting the development of global market economic, strengthening the user self–discipline of 3d industry and establishing a good image of 3d printing, since Creality 3d printer have passed all kinds of authorized product certificates and quality management system.hereby we declare that it is strictly forbidden to use our printer to print any products or equipment that are in violation of the specific country and regions legislation.



SHENZHEN CREALITY 3D TECHNOLOGY CO.,LTD.

11F & Room 1201,Block 3,JinChengYuan,Tongsheng Community,
Dalang,Longhua District,Shenzhen,China,518109

Official Website: www.creality.com

Tel: +86 755-8523 4565

E-mail: info@creality.com cs@creality.com

